

## GENERAL MEETING

*1 March 2017*

The information contained in this document ("Presentation") has been prepared by KEFI Minerals plc (the "Company"). While the information contained herein has been prepared in good faith, neither the Company nor any of its shareholders, directors, officers, agents, employees or advisers give, have given or have authority to give, any representations or warranties (express or implied) as to, or in relation to, the accuracy, reliability or completeness of the information in this Presentation, or any revision thereof, or of any other written or oral information made or to be made available to any interested party or its advisers (all such information being referred to as "Information") and liability therefore is expressly disclaimed. Accordingly, neither the Company nor any of its shareholders, directors, officers, agents, employees or advisers take any responsibility for, or will accept any liability whether direct or indirect, express or implied, contractual, tortious, statutory or otherwise, in respect of, the accuracy or completeness of the Information or for any of the opinions contained herein or for any errors, omissions or misstatements or for any loss, howsoever arising, from the use of this Presentation.

This Presentation may contain forward-looking statements that involve substantial risks and uncertainties, and actual results and developments may differ materially from those expressed or implied by these statements. These forward-looking statements are statements regarding the Company's intentions, beliefs or current expectations concerning, among other things, the Company's results of operations, financial condition, prospects, growth, strategies and the industry in which the Company operates. By their nature, forward-looking statements involve risks and uncertainties because they relate to events and depend on circumstances that may or may not occur in the future. These forward-looking statements speak only as of the date of this Presentation and the Company does not undertake any obligation to publicly release any revisions to these forward-looking statements to reflect events or circumstances after the date of this Presentation.

This Presentation should not be considered as the giving of investment advice by the Company or any of its shareholders, directors, officers, agents, employees or advisers. Each party to whom this Presentation is made available must make its own independent assessment of the Company after making such investigations and taking such advice as may be deemed necessary.

Neither this Presentation nor any copy of it may be (a) taken or transmitted into Canada, Japan, the Republic of Ireland, the Republic of South Africa or the United States of America (each a "Restricted Territory"), their territories or possessions; (b) distributed to any U.S. person (as defined in Regulation S under the United States Securities Act of 1933 (as amended)) or (c) distributed to any individual outside a Restricted Territory who is a resident thereof in any such case for the purpose of offer for sale or solicitation or invitation to buy or subscribe any securities or in the context where its distribution may be construed as such offer, solicitation or invitation, in any such case except in compliance with any applicable exemption. The distribution of this document in or to persons subject to other jurisdictions may be restricted by law and persons into whose possession this document comes should inform themselves about, and observe, any such restrictions. Any failure to comply with these restrictions may constitute a violation of the laws of the relevant jurisdiction.

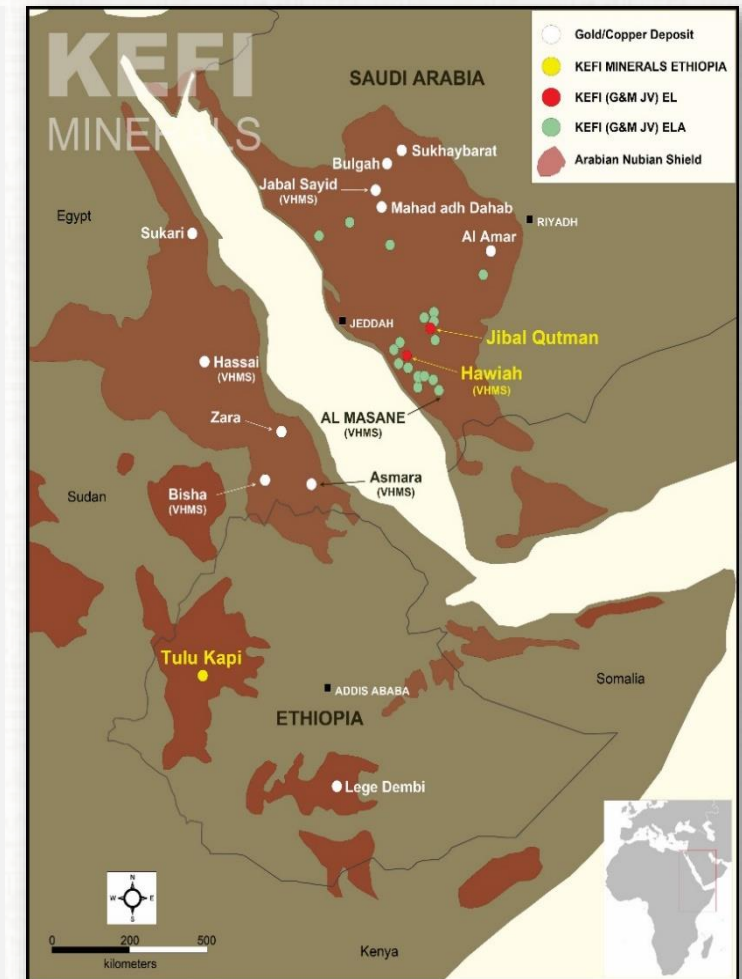
*Note: All references to \$ within this presentation refer to US\$*

### SAUDI ARABIA

- 2004-6: KEFI BUILT A DATABASE ON ARABIAN NUBIAN SHIELD
- 2007: KEFI PEGGED INSIDE SAUDI ARABIA
- 2008: KEFI JV'D SAUDI ARABIA WITH AL RASHID GROUP (ARTAR)
- 2009-2016
  - DISCOVERED HEAP LEACHABLE GOLD. LIKELY TO SCALE UP
  - PEGGED A WORLD CLASS VMS BELT ALONG FROM BARRICK
  - ASSEMBLED A PIPELINE OF >20 ELAs. GETTING LICENSED
- SAUDI IS ABOUT TO DEREGULATE & KEFI JUST UPGRADED THE PORTFOLIO

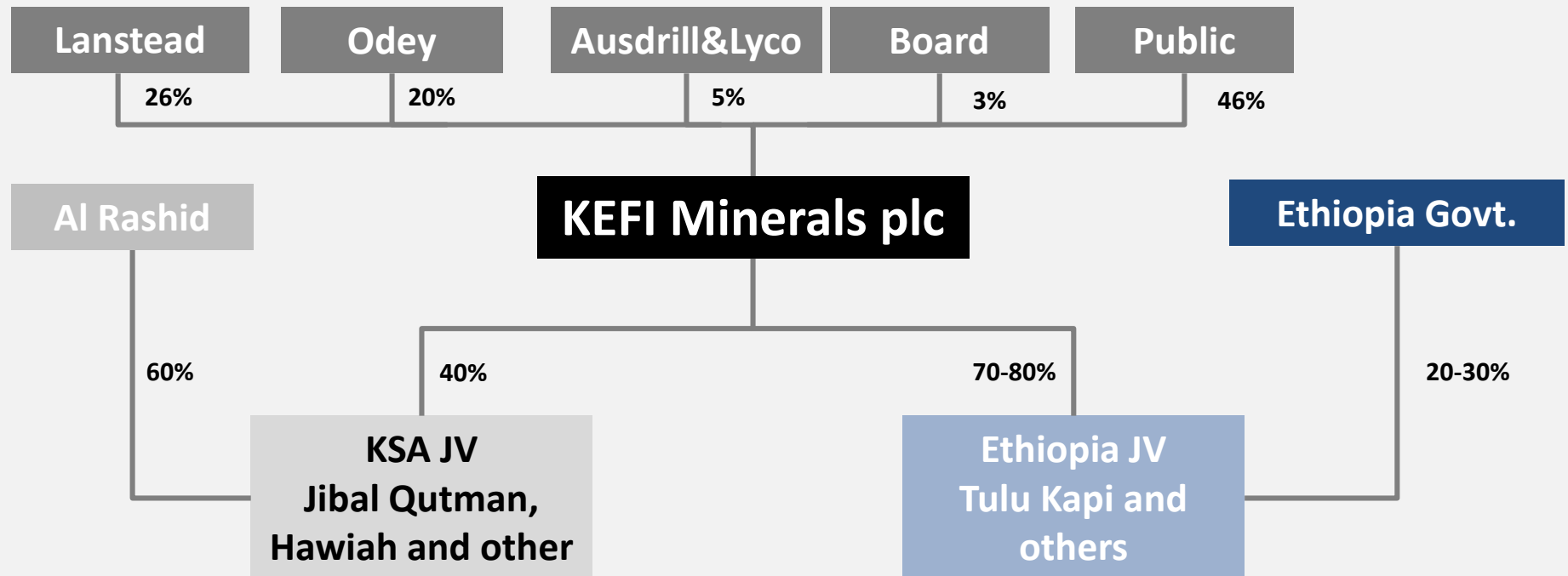
### ETHIOPIA

- 2014: KEFI BOUGHT ETHIOPIAN PROJECT FOR \$10/OZ RESERVE
- 2015: PERMITTED A NEW DFS & AGREED COMMUNITY RESETTLEMENT PLAN
- 2016: CONTRACTED MINE TO AUSDRILL AND PLANT TO LYCO
- 2016: FINANCING INTERRUPTED BY ETHIOPIAN STATE OF EMERGENCY
- 2017: NOW TO FINANCE AND DEVELOP TULU KAPI



Location of KEFI's c.1,500 km<sup>2</sup> exploration portfolio in the ANS

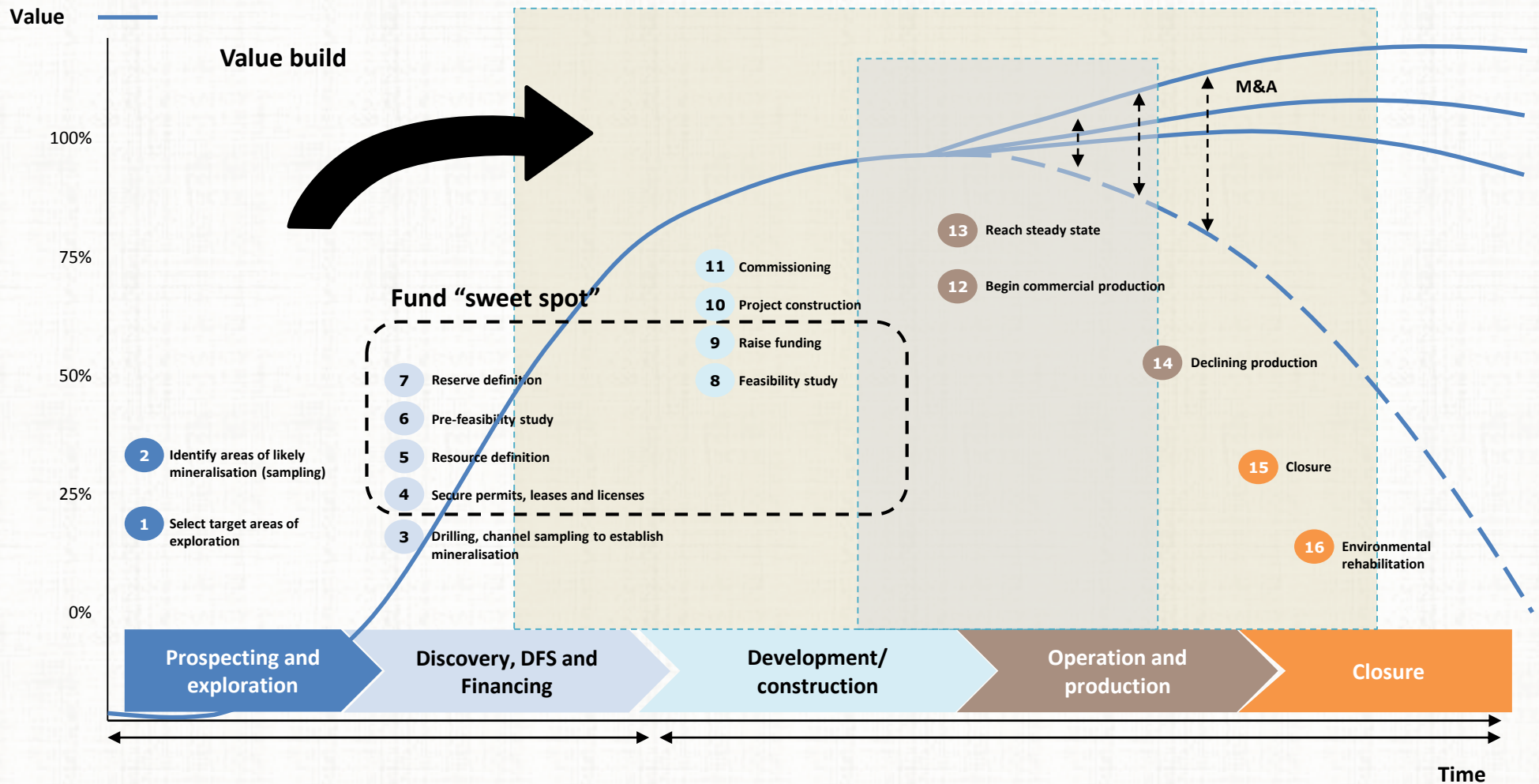
## TODAY'S GENERAL MEETING APPROVALS TO REINFORCE A STRONG PLATFORM



*The shareholdings in KEFI Minerals plc do not take into account the potential effect of the exercise of incentive options*



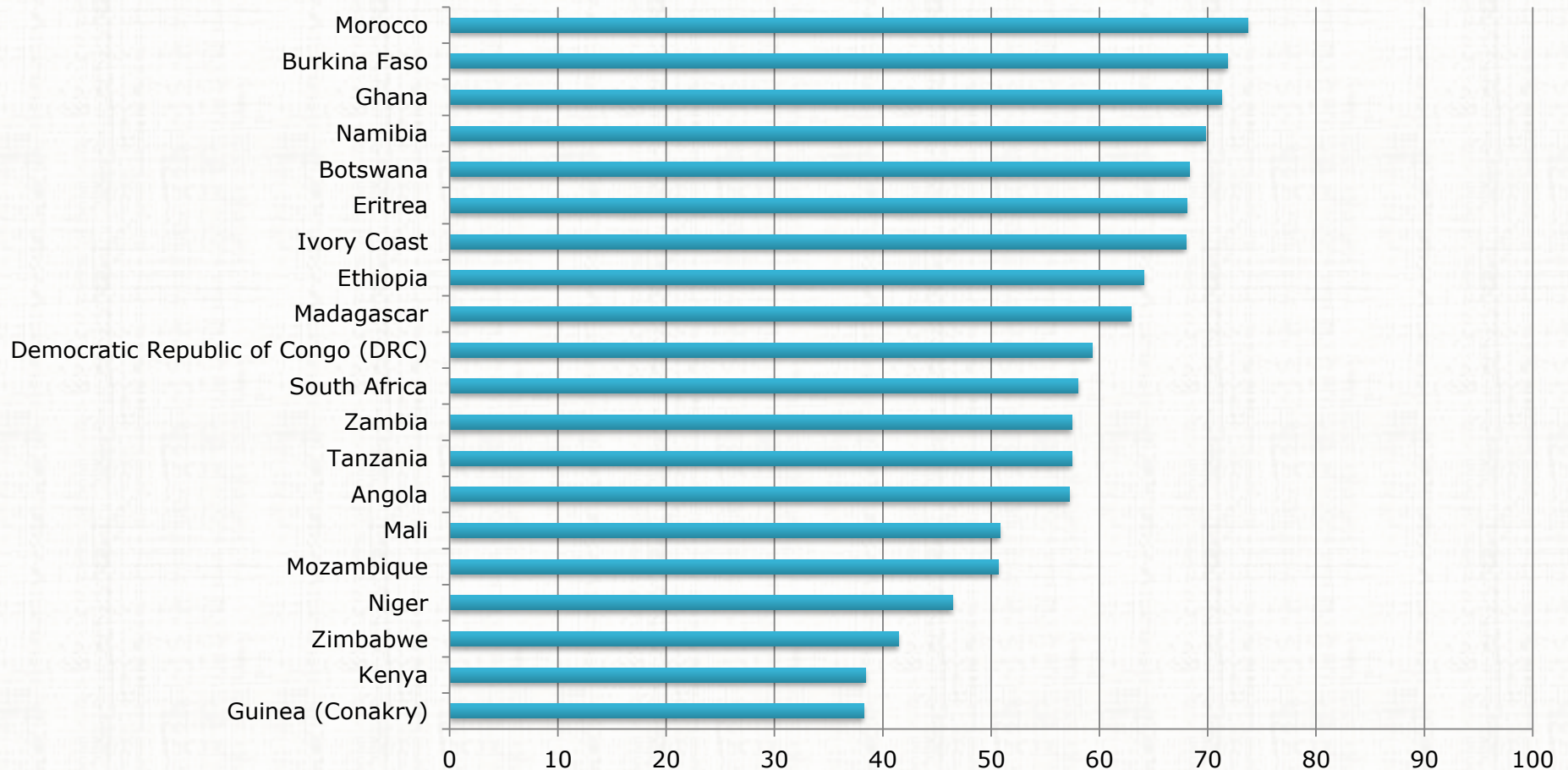
## SO AS TO PURSUE THE VALUE INFLECTION OF FINANCING AND DEVELOPMENT



|              |   |
|--------------|---|
| H1 2017      | <ul style="list-style-type: none"> <li>VAT refund £2.6M (extra working capital pending development finance)</li> <li>Project Finance execution (Tulu Kapi Project Contractors, Government, Financiers)</li> </ul>                           |
| H2 2017-2018 | <ul style="list-style-type: none"> <li>Development and Construction (Tulu Kapi, Ethiopia)</li> <li>MLA and DFS Jibal Qutman (Saudi Arabia)</li> <li>Prospecting and Exploration (Tulu Kapi District and Saudi Arabian portfolio)</li> </ul> |
| 2019         | <ul style="list-style-type: none"> <li>Operation and Production (Tulu Kapi Open Pit Mine)</li> <li>DFS (on Tulu Kapi Underground Mine)</li> <li>Development and Construction (Jibal Qutman, Saudi Arabia)</li> </ul>                        |
|              |   |

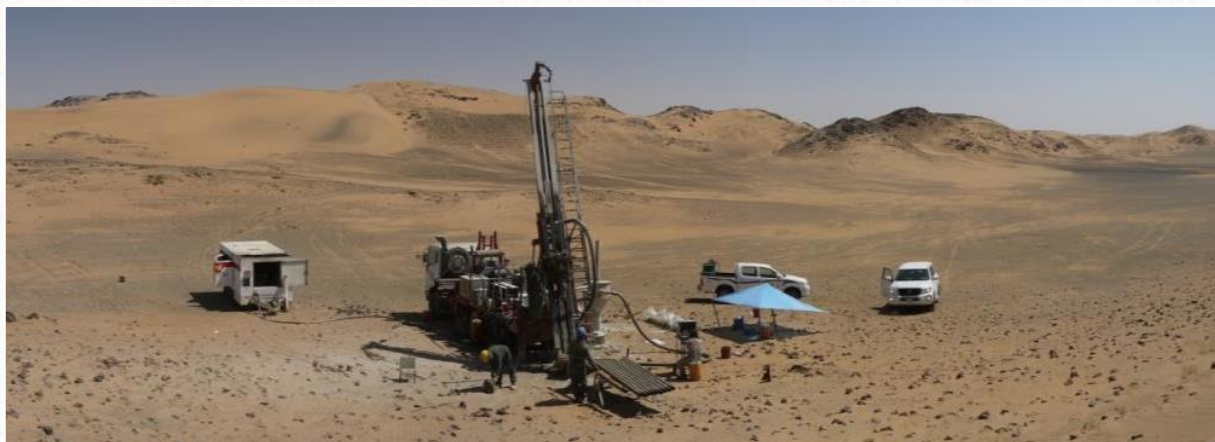
## ETHIOPIA'S RANKING FOR INVESTMENT ATTRACTIVENESS

Fraser Institute Survey, published June 2016. Rank 51 of 109 globally

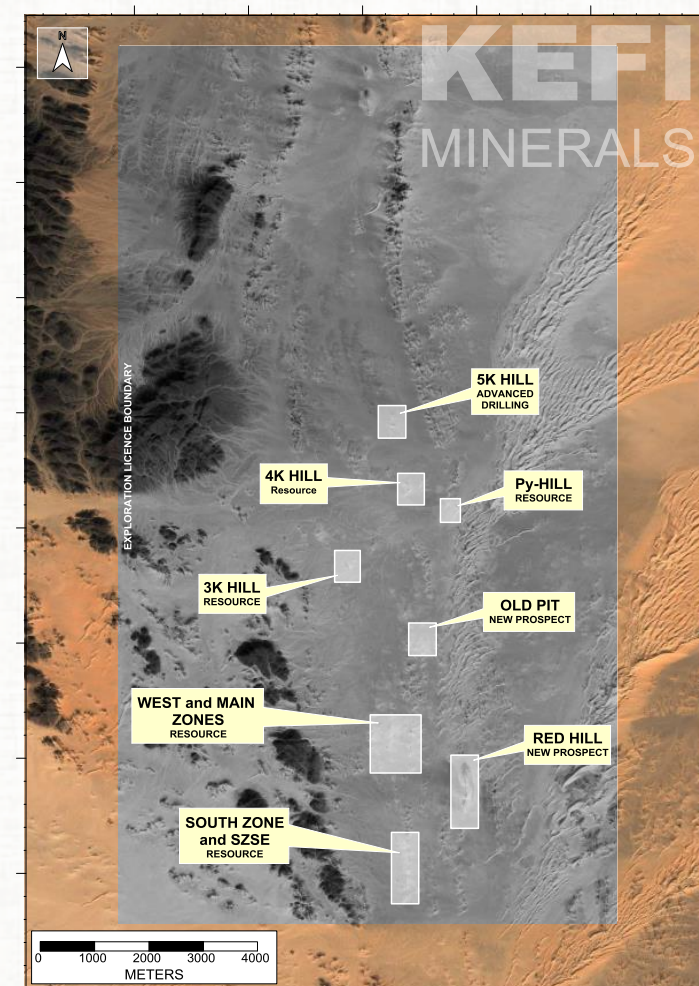


## SAUDI DISCOVERY JIBAL QUTMAN-A HEAP LEACHABLE STRING OF OPEN PITTABLE DEPOSITS

- c.99km<sup>2</sup> EL was granted in July 2012. JORC Resource 0.73Moz
- Four ELAs around Jibal Qutman EL with satellite open pit targets
- KEFI-operated JV targets to develop a small operation to fund additional pits at Jibal Qutman plus regional exploration

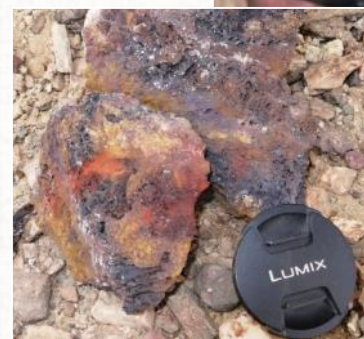
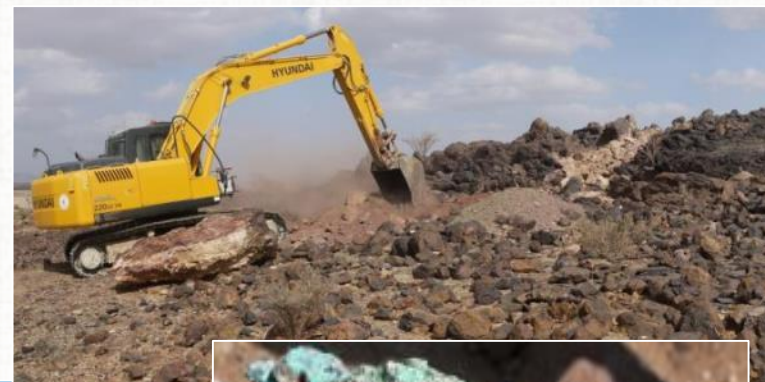


- Delineating further shallow oxide gold but now sufficient to start Mining Licence process and completion of full feasibility study
- Mining Licence Application being discussed with regulators. Awaiting new regulatory regime before taking next steps.



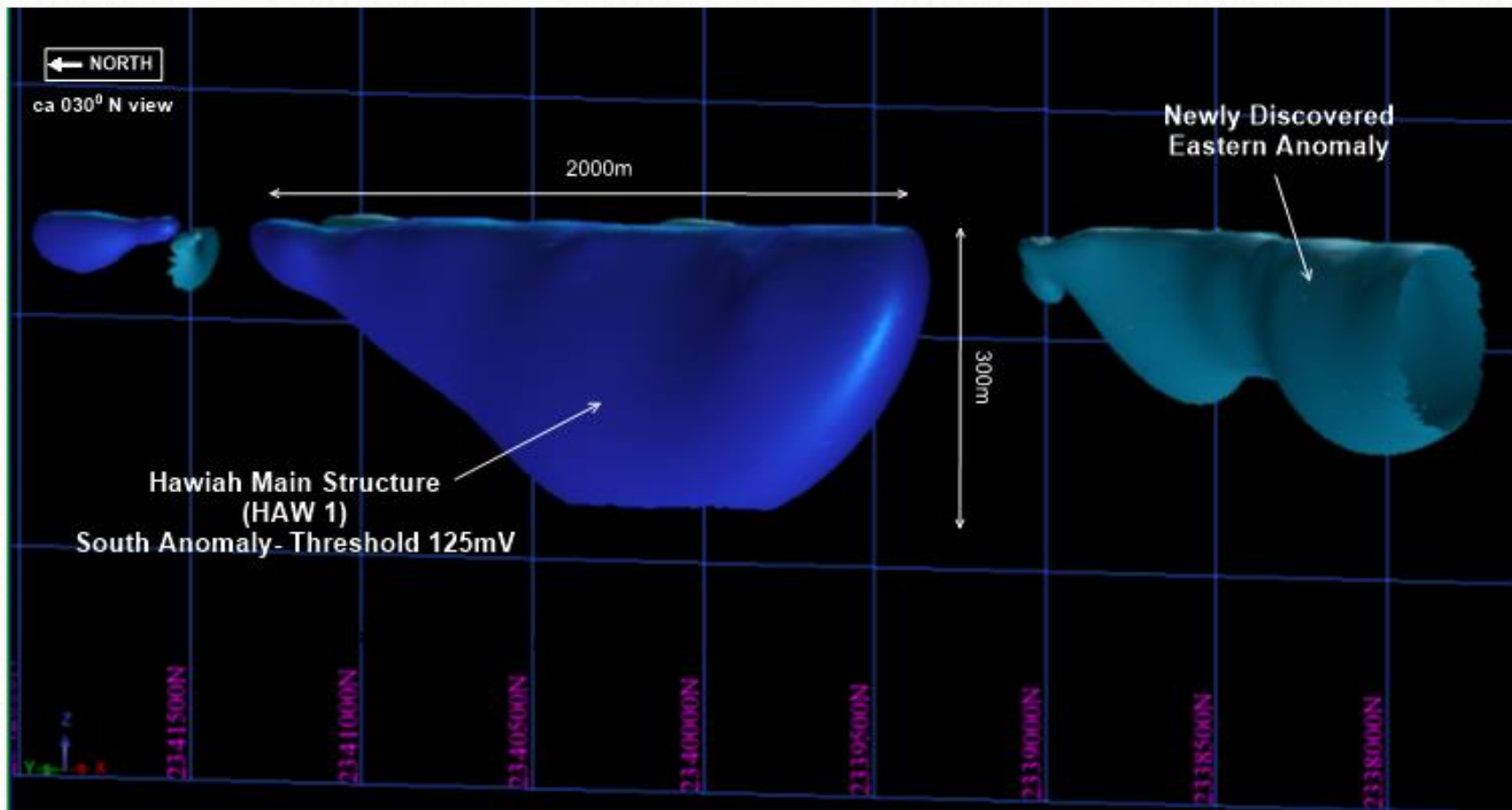


- 100km<sup>2</sup> Hawiah EL
- Hosted in +120km nth-sth trending Wadi Bidah VHMS Mineral district
- 6 km of gold-bearing gossans at surface and potential for underlying Cu-Au-Zn indicates massive sulphide orebodies
- Trenched over the 6km, highly silicified and gossanous horizon, with abundant secondary copper showings
- Ongoing Self-Potential geophysical orientation survey to define drill targets



## HAWIAH: SP GEOPHYSICAL SURVEY OUTLINE OF LARGE POTENTIAL METAL-BEARING BODY

### 3D Long Section of Hawiah Self-Potential Anomaly



- **Revitalised gold development story:** Since assuming control of the Tulu Kapi project in Ethiopia (2014), the team has overhauled the geological database and its interpretation, optimised the mine plan, consequently improving economics
- **Overhauled DFS and subsequently optimised with contractors:** Now a financially robust project, producing an average of 115Koz pa over the first 8yrs, with 20% of resources outside current mine plan. the underground deposit and surrounding targets are extra
- **Development ready:** Mining licence is in place and KEFI has signed bilateral agreement with the Government of Ethiopia, selected mining and construction contractors, and completed Independent Technical Reviews on behalf of potential lenders
- **Experienced management team:** KEFI team has collectively financed and constructed six mines across Africa and Asia-Pacific, including Perseus' Edikan in Ghana and Crew Gold's SMD in Guinea. Team has 10 years in-country experience
- **Underwriting the Runway:** Financing on 1 March 2017 supports working capital for 12-18 months, pending completion of Project Financing of Tulu Kapi. Important protection against political and other risks, so as to optimise choices for shareholders
- **Project Financing of Tulu Kapi in progress:** Viable proposals have been elevated since replacing some financiers who retracted in H2-16. Targeting to commence construction H2-17. The sooner this is achieved and the better the terms of the financing, the higher the expected equity contribution of Lanstead Capital.

- **333M: Shares on issue** post the financing and 17:1 consolidation considered on 1 March 2017 (5,655 million pre-consolidation)
- **£77M: NPV<sub>8</sub> now, as at mid-2017 (US\$94M):** Open Pit + Underground (After Tax) at \$1,250/oz. This is for 75% of project
- **£113M: 2-year Target NPV<sub>8</sub> at start production (US\$140M):** Open Pit + U'grnd (After Tax) at \$1,250/oz. This is for 75% of project
- **2-year Target Pence per share at start of production:**
  - **34.0 pence** per share post 17:1 consolidation
  - **2.0 pence** per share pre-consolidation
- **Under-valued:** Compared to peer group of African gold developers, KEFI is significantly under-valued by the market
- **Upside potential:**
  - Tulu Kapi deposit is open at depth and preliminary studies indicate feasibility of an underground development, and
  - There is significant potential in KEFI's Saudi Arabian portfolio, via its 40% interest in the G&M joint venture





*Local community briefing at Tulu Kapi*

**Harry Anagnostaras-Adams, Executive Chairman**  
**John Leach, Finance Director**

**Cyprus** - Group corporate team  
**Ethiopia** - Development and exploration teams  
**Saudi Arabia** - Exploration team

Email: [info@kefi-minerals.com](mailto:info@kefi-minerals.com)  
Website: [www.kefi-minerals.com](http://www.kefi-minerals.com)

**Luther Pendragon Ltd (Financial PR)**  
Harry Chathli, Claire Norbury, Ana Ribeiro  
Tel: +44 (0) 20 7618 9100