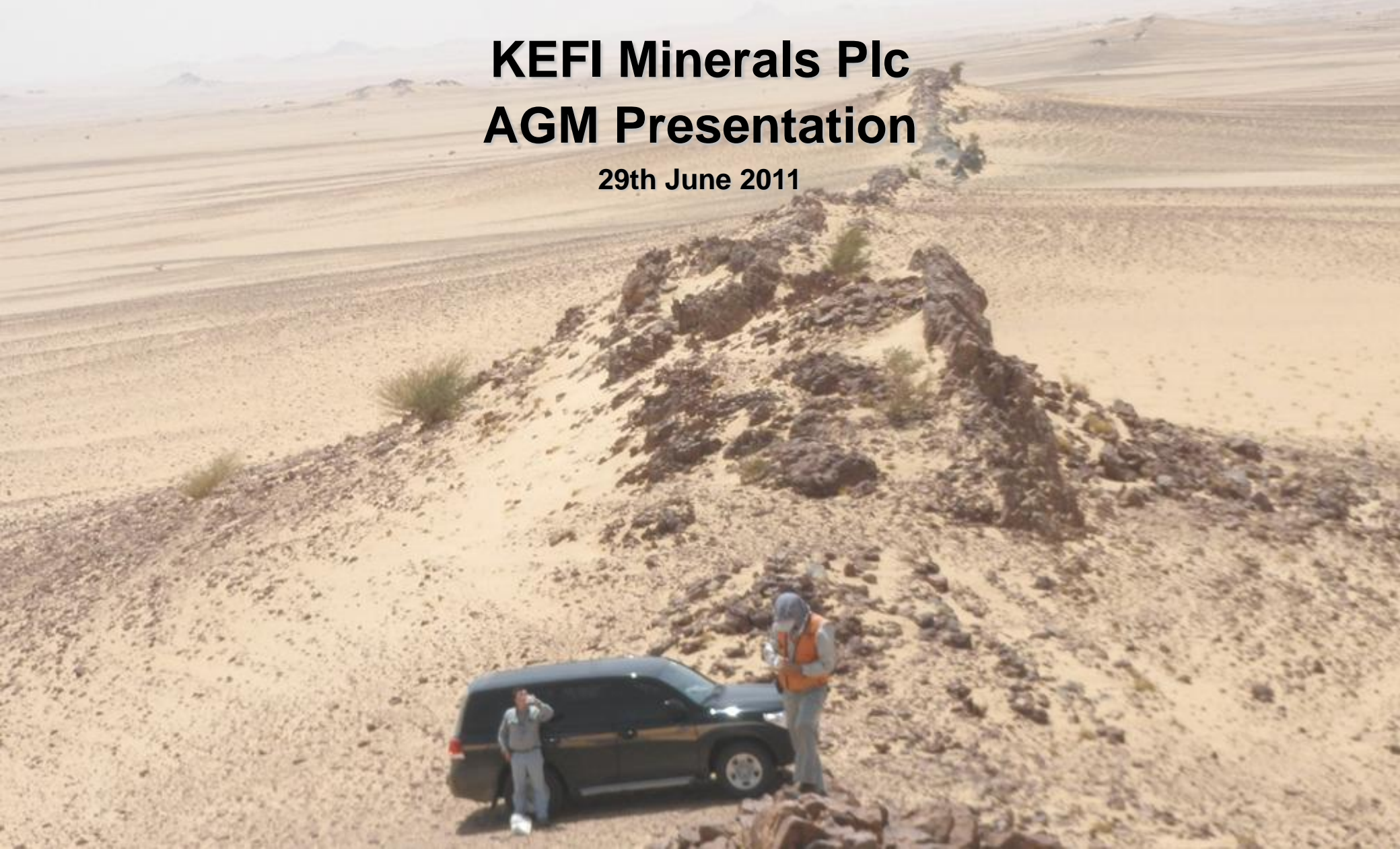


**Excellence in Discovery**

**KEFI**  
MINERALS

# **KEFI Minerals Plc AGM Presentation**

**29th June 2011**



## DISCLAIMER

While the information contained herein has been prepared in good faith, the Company nor any of its shareholders, directors, officers, agents, employees or advisers give, have given or have authority to give, any representation or warranty, express or implied, as to the accuracy, reliability, completeness or fairness of the information or opinions contained in this Presentation or any revision thereof, or of any other written or oral information made or to be made available to any interested party or its advisers (all such information being referred to as “**Information**”) and liability therefore is expressly disclaimed. Accordingly, neither the Company nor any of its shareholders, directors, officers, agents, employees or advisers take any responsibility for, or will accept any liability whether direct or indirect, express or implied, contractual, tortious, statutory or otherwise, in respect of, the accuracy or completeness of the Information or for any of the opinions contained herein or for any errors, omissions or misstatements or for any loss, howsoever arising, from the use of this Presentation.

Neither the issue of this Presentation nor any part of its contents is to be taken as any form of commitment on the part of the Company to proceed with any transaction and the right is reserved to terminate any discussions or negotiations with any prospective investors. In no circumstances will the Company be responsible for any costs, losses or expenses incurred in connection with any appraisal or investigation of the Company. In furnishing this Presentation, the Company does not undertake or agree to any obligation to provide the recipient with access to any additional information or to update this Presentation or to correct any inaccuracies in, or omissions from, this Presentation which may become apparent.

This Presentation should not be considered as the giving of investment advice by the Company or any of its shareholders, directors, officers, agents, employees or advisers. In particular, this Presentation does not constitute an offer or invitation to subscribe for or purchase any securities and neither this Presentation nor anything contained herein shall form the basis of any contract or commitment whatsoever. Each party to whom this Presentation is made available must make its own independent assessment of the Company after making such investigations and taking such advice as may be deemed necessary. In particular, any estimates or projections or opinions contained herein necessarily involve significant elements of subjective judgment, analysis and assumptions and each recipient should satisfy itself in relation to such matters.

The Company has not been, and will not be, registered under the United States Investment Company Act of 1940, as amended, and investors will not be entitled to the benefits of that Act.

Neither this Presentation nor any copy of it may be (a) taken or transmitted into Canada, Australia, Japan, the Republic of South Africa, the Republic of Ireland the United States of America (the “**United States**”) (each a “**Relevant Territory**”) or their territories or possessions; (b) distributed, directly or indirectly, in the United States, or to any U.S Person as defined in Regulation S under the Securities Act 1933 (as amended), including U.S resident corporations or other entities organised under the laws of the United States or any state thereof or non-U.S branches or agencies of such corporations or entities or into a Relevant Territory; or (c) distributed to any individual outside a Restricted Territory who is a resident thereof in any such case for the purpose of offer for sale or solicitation or invitation to buy or subscribe any securities or in the context where its distribution may be construed as such offer, solicitation or invitation, in any such case except in compliance with any applicable exemption.. The distribution of this document in or to persons subject to other jurisdictions may be restricted by law and persons into whose possession this document comes should inform themselves about, and observe, any such restrictions. Any failure to comply with this restriction may constitute a violation of the laws of the relevant jurisdiction.

Forward-Looking Statements. Information contained in this Presentation may include ‘forward-looking statements’. All statements other than statements of historical facts included herein, including, without limitation, those regarding the Company’s financial position, business strategy, plans and objectives of management for future operations (including development plans and objectives relating to the Company’s business) are forward-looking statements.

Such forward-looking statements are based on a number of assumptions regarding the Company’s present and future business strategies and the environment in which the Company expects to operate in future. Actual results may vary materially from the results anticipated by these forward-looking statements as a result of a variety of factors.

These forward-looking statements speak only as to the date of this Presentation and cannot be relied upon as a guide to future performance. The Company expressly disclaims any obligation or undertaking to disseminate any updates or revisions to any forward-looking statements contained in this Presentation or reflect any changes in its expectations with regard thereto or any change in events, conditions or circumstances on which any statement is based.



# Exploration Strategy

KEFI's exploration strategy is to explore for and develop gold and copper deposits in the;

Arabian-Nubian Shield in Saudi Arabia and in the

Tethyan Metallogenic Belt in Turkey

And other opportunities in the Region

Our recent efforts have focussed on Saudi Arabia, due to a more favourable situation with the greater availability of highly prospective ground.



# The Arabian Shield

There are five operating gold mines in Saudi Arabia.

Three new base metal mines are in development stage- Al Masane Zn-Cu-Au, Jabal Sayid Cu and Khnaiguiyah Zn-Cu.

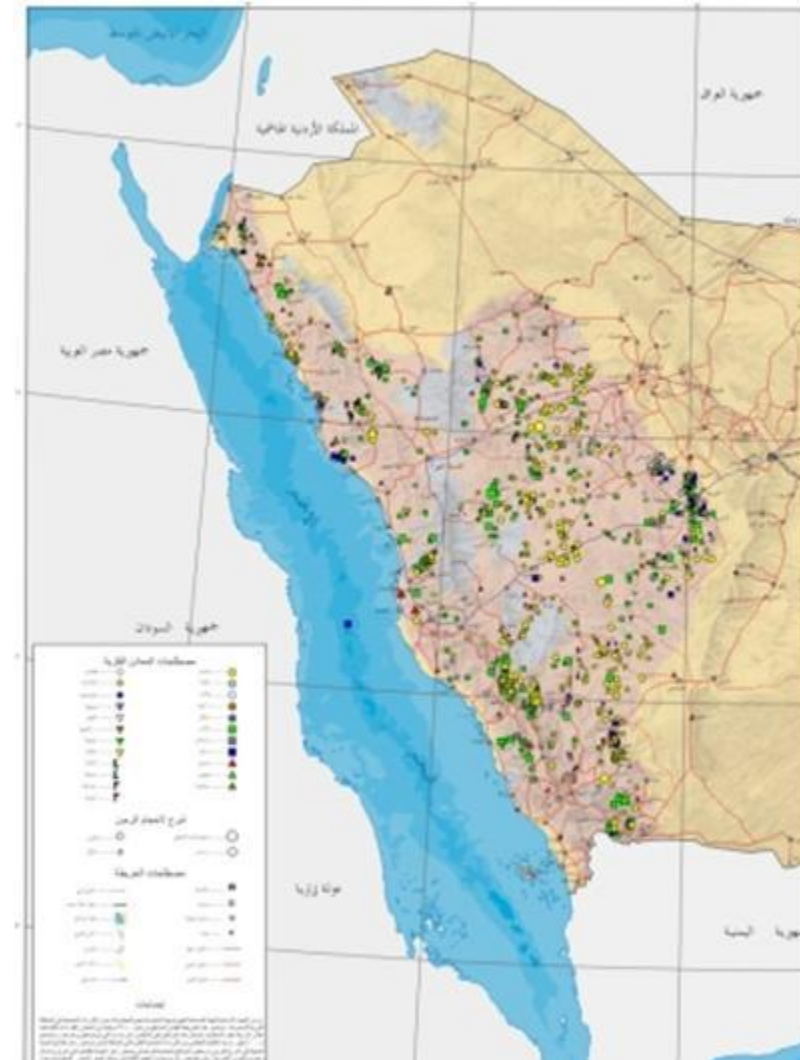
Ma'aden has increased their total Au Resources from 8M oz Au in 2008 to **11Moz Au in 2011** and is conducting Final Feasibility studies to develop another three new mining centres in the Central Arabian Gold Region.

Prior to 2004, private companies were not allowed to explore for gold in Saudi.

There are over 5000 documented historic workings for gold and base metals in Saudi.

The potential of the Shield is very large and is just starting to be realised.

The geology and exploration methodology is similar to that in Pre Cambrian Shield in Canada and West Australia.



# First Exploration Licence Granted in Saudi Arabia

KEFI Minerals and JV Partners ARTAR (G&M JV) commenced initial applications for exploration licences in Saudi Arabia in November 2008.

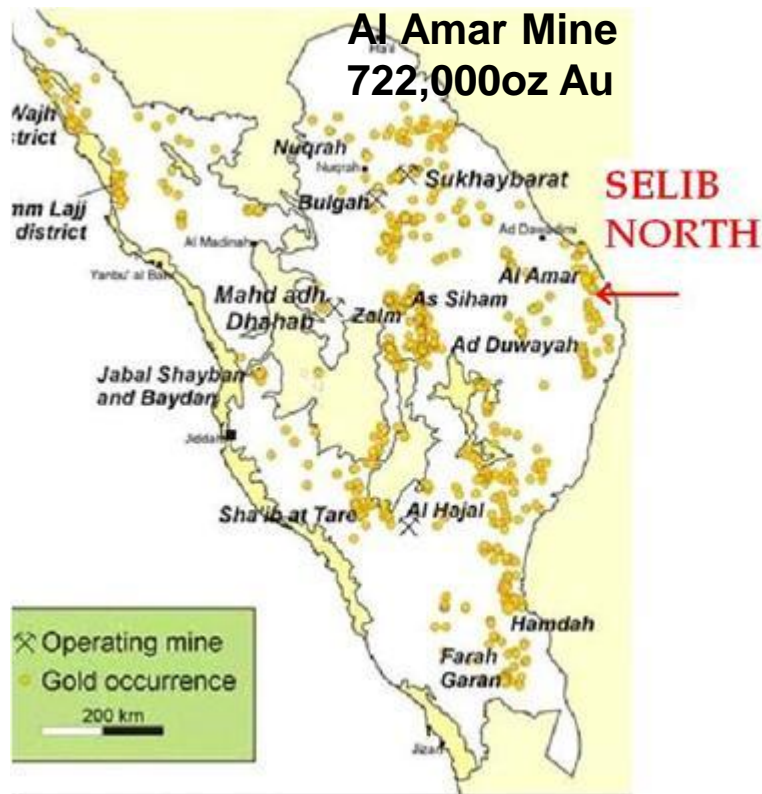
There are currently 19 Licences in Application (ELA's) and our first Exploration Licence **SELIB NORTH** was granted on 16th June, 2011.

Of the 19 ELA's, two have recently been approved and exploration contracts have been signed by the Deputy Ministry of Mineral Resources (DMMR). These are now under final review by the Supreme Committee for Concessions in Riyadh.

A further three ELA's have been approved by the relevant Provincial Government Authorities (IMARA) and are in for final processing by the DMMR.



# Selib North EL



The Al Amar Belt is a prolific host to Au and base metal mineralisation. It is a 200km long and a mineral occurrence or mine is located every 8-5km along its Western limit; the Jabal Idsas-Al Amar Fault zone. Selib North covers an area of 75km<sup>2</sup> and is located over 10km strike length of this fault zone

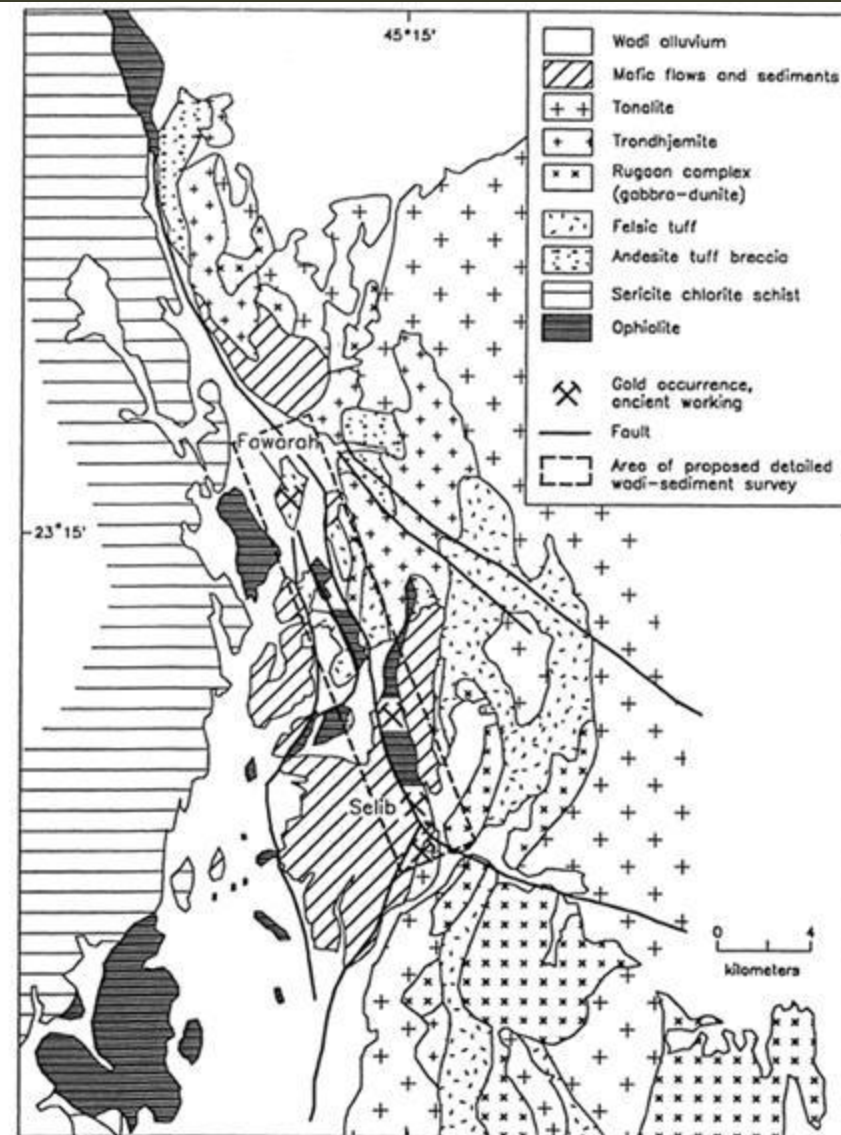


FIGURE 21.—Geologic map of the Selib-Fawarah gold area after Coulomb (1983a) showing proposed exploration.

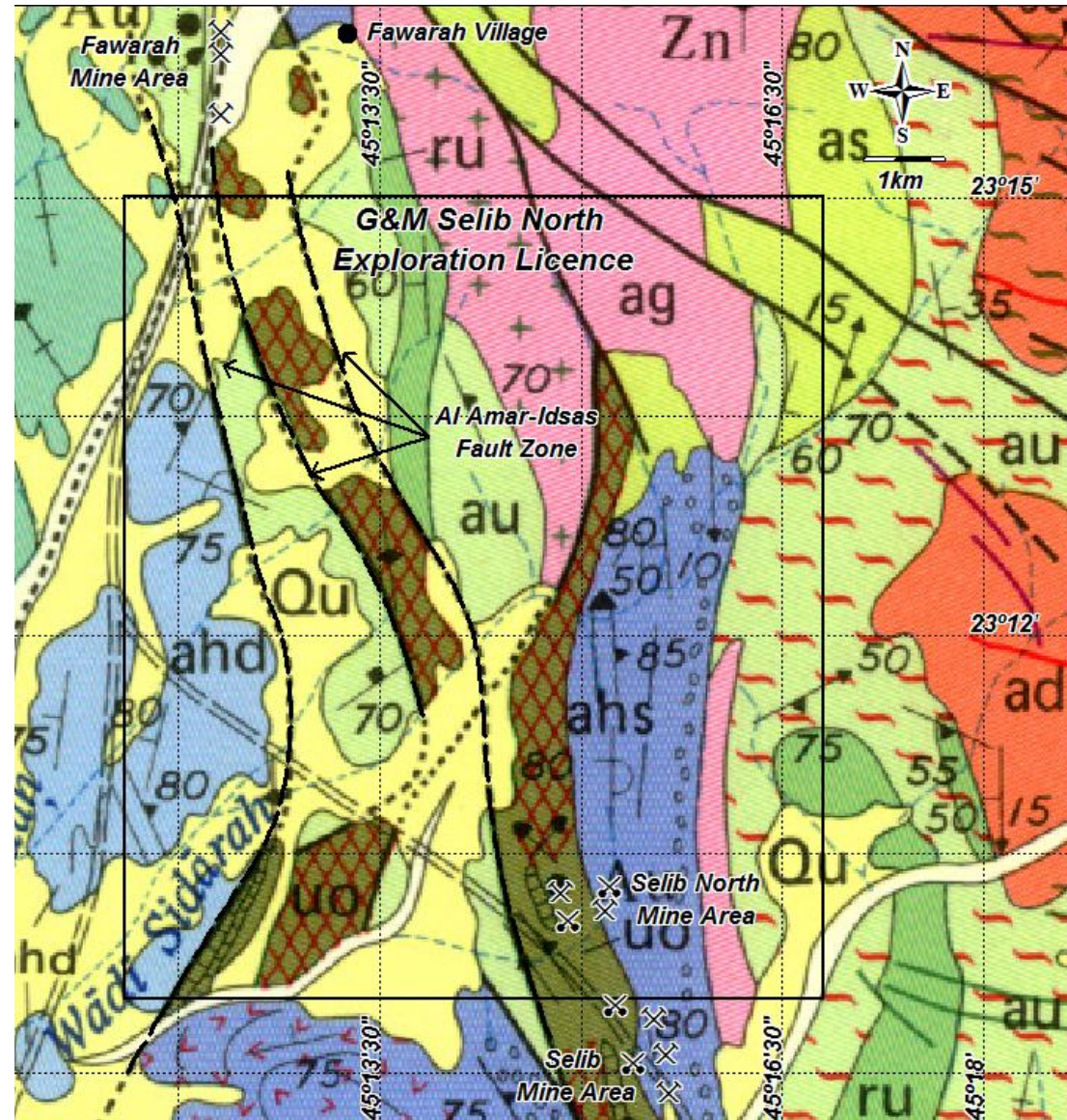


# Selib North EL

Historic workings occur at Farawah, Selib North and at Selib. Numerous “tumuli”, or alluvial and elluvial dumps mark the base of ridges along this 15km zone, which forms part of the Jabal Idsas-Al Amar Fault Zone.

The BRGM explored the Fawarah and Selib prospects in the early 1980's.

They proposed to cover the entire strike length between Fawarah and Selib in 1983, but budgetary restraints put a halt to the work.





## Selib North EL



Ancient workings at Farawah (left photo) and looking SE towards the Selib North Prospect. The right photo shows extensive historic elluvial workings for gold at Selib, which extends north into G&M's Selib North Licence area. Sampling of the dumps at Selib by the BRGM returned up to 17.8 g/t Au.



## Selib North EL



Historic gold mining at Selib North. Left and right photographs show large dumps of crushed quartz and altered rock at the base of ridges along the Jabal Idsas-Al Amar Fault Zone.



# Selib North EL



Alteration and mineralised zones can be found along the Fault zone from Farawah to Selib, a distance of 10km within the Selib North Licence area. These areas have never been explored by modern exploration. Alteration and shearing (light brown colours) are evident below a thin layer of scree. Limited reconnaissance sampling has returned 2 g/t Au from these alteration zones.



# **ELA's Awaiting Approval in Riyadh**

The two G&M ELA's approved by the DMMR and awaiting final approval in Riyadh are located within 45km of a major +2.5Moz Au Resource and within 7 km of a +300,000oz Au Resource, both held by Ma'aden, the 50% Government owned mining company. Major northwest trending shear zones are located in these ELA's with historic gold workings.



# Other Application Areas

High grade gold has been returned from G&M rock chip sampling and in limited drilling by the BRGM of this ancient gold mine.

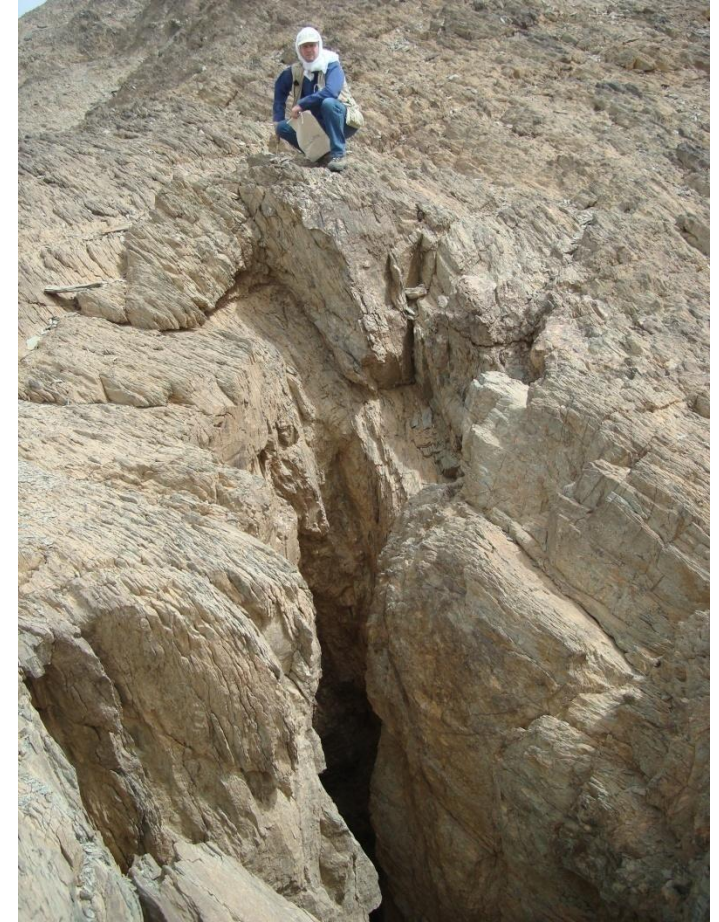
This prospect is located in a major mineralised shear zone and is well advanced in the permitting stage.

The prospect has been mined to shallow depths by the ancients and represents a “walk up drill target”.





## Other Application Areas



The photographs above are from an ELA which is well advanced in the permitting stage. It is located 45km from the Mahd Adh Dhahab (Ma'aden) mine and contains anomalous copper and gold in historic workings.



# Other Application Areas

Numerous historic workings on gold bearing quartz vein zones with large placer deposits in the immediate drainage.

The BRGM performed reconnaissance work only in this area which has been recommended for further work by geological consultants Watts, Griffis McQuat Limited (“WGM”).

This Licence is also well advanced in the permitting stage.



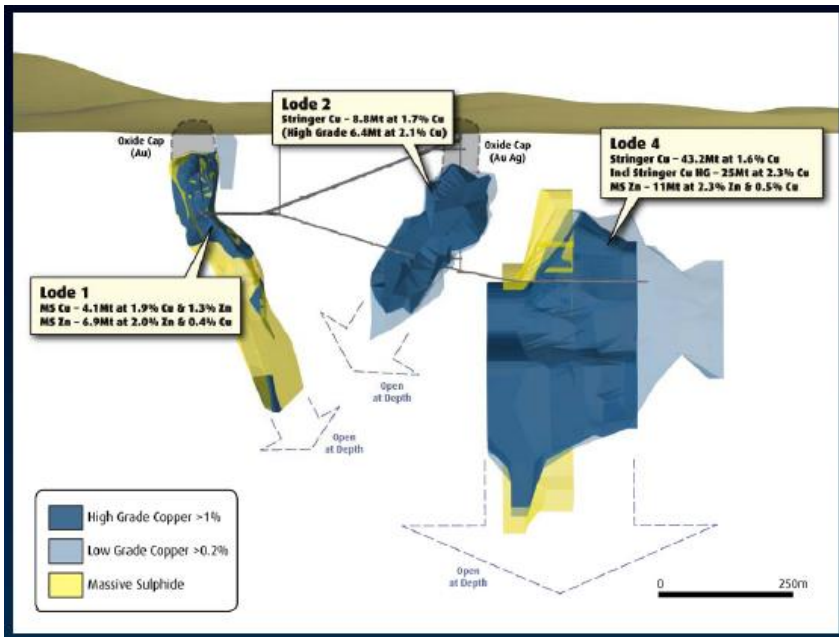


# Examples of VMS Deposits, Arabian Nubian Shield

Nevsun Resources Bisha Mine, Eritrea  
High-grade Au (7.99 g/t), Cu 4.4% and Zn 7.21%)

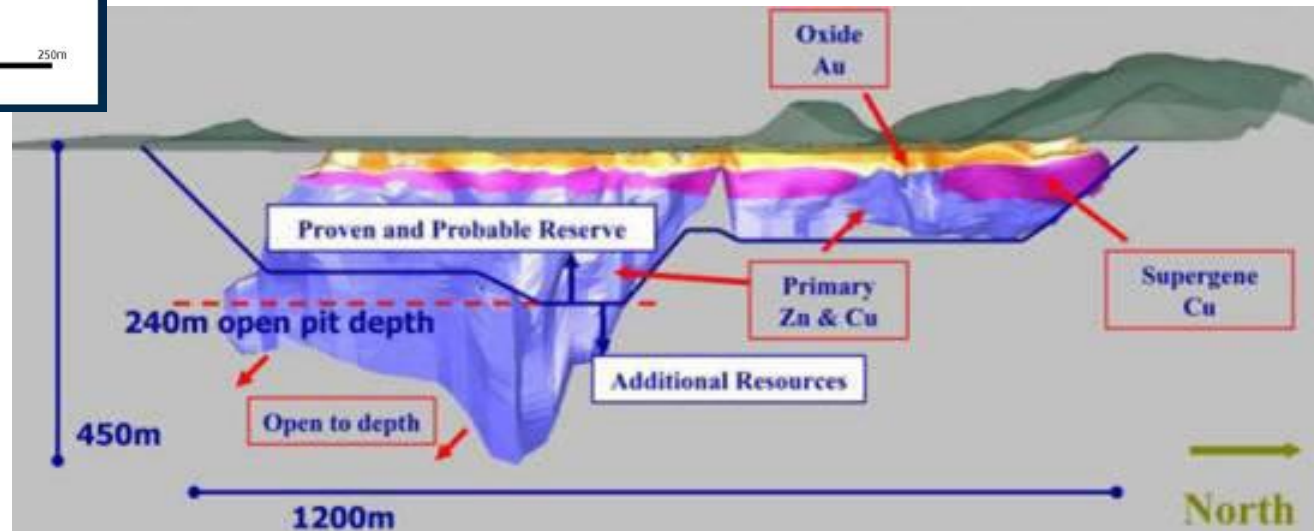
1.06 Million Oz Au, 9.4 Million Oz Ag  
330,000 t Cu, 488,000t Zn

Net Cash flow \$180M per yr, Capex \$250M (below).



Barrick Gold Corp (ex-Citadel)Jabal Sayid, Saudi Arabia 99M t 1.2% Cu.

118,000t Cu contained copper (above)



# G&M ELA's: Gossans developed on VMS structures



G&M JV ELA's contain large Gossan structures developed as a product of weathering on VMS deposits. We have over 8km strike length of gold bearing gossans on three separate ELA's

Never been drilled.

Potential for shallow open cut gold mines and larger VMS Deposit down dip.  
Requires RC drilling, geophysics (IP/EM Surveys) and deeper diamond drilling



# Current Status on Permitting in Saudi

	Exploration Licence Application	Initial DMMR Review	Modify ELA as Required	Technical Report Submitte d	DMMR Imara Committee Meeting	Arrang e Date of Imara Meetin g	Imara Committ ee Meeting	Emir Approval/ Disapproval	Province Approval/ Disapproval	DMMR Finalisation	Riyadh Approval
EL 1											
ELA 1											Pending
ELA 2											Pending
ELA 3										Pending	
ELA 4											
ELA 5											
ELA 6											
ELA 7											
ELA 8											
ELA 9											
ELA 10											
ELA 11											
ELA 12											
ELA 13											
ELA 14											
ELA 16											
ELA 17											
ELA 18											
ELA 19											

# Imara Merkez Meetings



Imara meetings are attended by 12 or more representatives of Government Agencies and Committees at the exploration application area. The Committee assesses the impact of exploration on a number of issues including, archaeological sites, agriculture, water and local communities. If the ELA's passes this stage of permitting, it is more than likely to be granted by the DMMR.



# Forward Work Programme

## Selib North

Mapping and prospect scale sampling to commence in July.

Work will slow down during Ramadan (August) and September- National holidays for 10 days.

Soil sampling, trenching and possibly geophysical surveys will be performed to generate drill targets by November-December 2011.

## Pending EL's (x2)

The targets are quartz vein- gold type, hosted in shear zones or in association with intrusives.

A similar programme will be implemented as Selib North as soon as the Licences are granted.

## Permitting

G&M is actively and persistently pursuing the progress of all lodged ELA's.

Our partner, ARTAR is providing G&M with support on permitting every day. 19

# Turkey

The Department of Mines and Energy in Turkey has not released any new areas for public tender for Group IV minerals (precious and base metals) for almost two years.

The only way to acquire ground from the DME is by application for areas that were “free two years ago” and by acquiring properties from other parties.

KEFI is divesting projects that have been (drill) tested and deemed to be down-graded to host a significant deposit.

We continue to assess properties on offer by local groups, utilising KEFI’s substantial proprietary data base.

The Government has increased the renewal and application fees for Exploration Licences. Tenment size remains very small and no minimum expenditure requirements have been applied, making it difficult for an over night remedy for efficient and effective exploration.

Prospectivity for large Au and BM deposits remains high and KEFI is “on watch” in Turkey.



# Turkey

In 2011, KEFI sold the Derinin Tepe (aka Kizilcukur) licence to Ariana Resources. KEFI drill tested the epithermal veins in 2007 and 2008. Some high grades were encountered, but the resource is unlikely to be a “stand alone” mine.

The sale was for a nominal amount of cash and shares and a 2% NSR on all metals produced.

Ariana are developing a central processing plant to mine and treat ores for its Kiziltepe (WAVE) deposits and is the most likely company to mine and process any ore mined from Derinin Tepe.



# Turkey

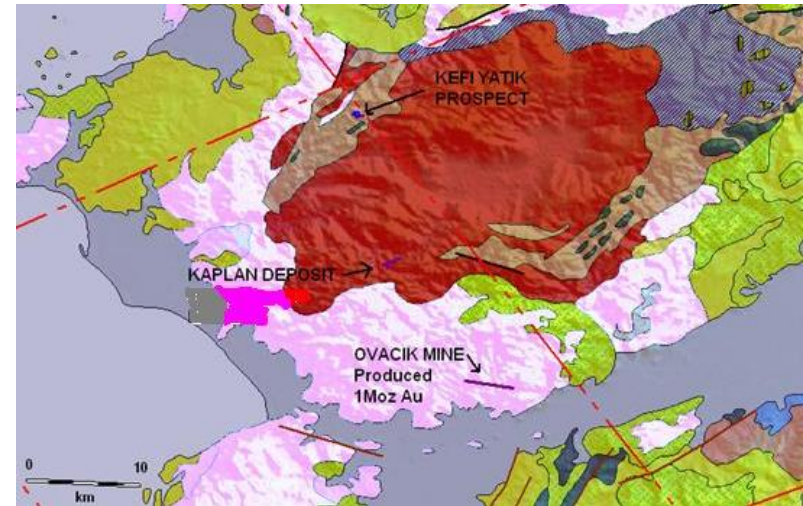
KEFI sold the Yatik property to Koza Altin, the operator of the Ovacik mine and currently developing the Kaplan deposit.

The sale was for \$150,000 and a 2.5% NSR from all metals produced.

The Yatik epithermal gold vein lies in a highly productive gold structural zone.

However, due to the tendering sequence and process, KEFI acquired the western third of the vein and Koza subsequently successfully won the eastern portion a year later.

Koza is the most likely company to eventually mine the Yatik deposit.





# Corporate

364,979,689 Ordinary Shares in issue .

Approx £19M Mcap

28.6 million options and warrants with exercise prices of 1p to 7p.

The significant shareholders in KEFI are:  
EMED Mining (18.5%);  
BARCLAYSHARE Nominees Limited (8%);  
TD Waterhouse Nominees (Europe) Limited (10%)

Cash position £1.45M

