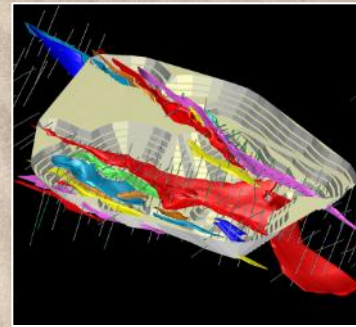


## EMERGING GOLD PRODUCER IN THE ARABIAN-NUBIAN SHIELD



HARRY ANAGNOSTARAS-ADAMS  
CHAIRMAN OF KEFI MINERALS PLC

OCTOBER 2014

The information contained in this confidential document ("Presentation") has been prepared by KEFI Minerals plc (the "Company"). While the information contained herein has been prepared in good faith, neither the Company nor any of its shareholders, directors, officers, agents, employees or advisers give, have given or have authority to give, any representations or warranties (express or implied) as to, or in relation to, the accuracy, reliability or completeness of the information in this Presentation, or any revision thereof, or of any other written or oral information made or to be made available to any interested party or its advisers (all such information being referred to as "Information") and liability therefore is expressly disclaimed. Accordingly, neither the Company nor any of its shareholders, directors, officers, agents, employees or advisers take any responsibility for, or will accept any liability whether direct or indirect, express or implied, contractual, tortious, statutory or otherwise, in respect of, the accuracy or completeness of the Information or for any of the opinions contained herein or for any errors, omissions or misstatements or for any loss, howsoever arising, from the use of this Presentation.

This Presentation may contain forward-looking statements that involve substantial risks and uncertainties, and actual results and developments may differ materially from those expressed or implied by these statements. These forward-looking statements are statements regarding the Company's intentions, beliefs or current expectations concerning, among other things, the Company's results of operations, financial condition, prospects, growth, strategies and the industry in which the Company operates. By their nature, forward-looking statements involve risks and uncertainties because they relate to events and depend on circumstances that may or may not occur in the future. These forward-looking statements speak only as of the date of this Presentation and the Company does not undertake any obligation to publicly release any revisions to these forward-looking statements to reflect events or circumstances after the date of this Presentation.

This Presentation should not be considered as the giving of investment advice by the Company or any of its shareholders, directors, officers, agents, employees or advisers. Each party to whom this Presentation is made available must make its own independent assessment of the Company after making such investigations and taking such advice as may be deemed necessary.

Neither this Presentation nor any copy of it may be (a) taken or transmitted into Australia, Canada, Japan, the Republic of Ireland, the Republic of South Africa or the United States of America (each a "Restricted Territory"), their territories or possessions; (b) distributed to any U.S. person (as defined in Regulation S under the United States Securities Act of 1933 (as amended)) or (c) distributed to any individual outside a Restricted Territory who is a resident thereof in any such case for the purpose of offer for sale or solicitation or invitation to buy or subscribe any securities or in the context where its distribution may be construed as such offer, solicitation or invitation, in any such case except in compliance with any applicable exemption. The distribution of this document in or to persons subject to other jurisdictions may be restricted by law and persons into whose possession this document comes should inform themselves about, and observe, any such restrictions. Any failure to comply with these restrictions may constitute a violation of the laws of the relevant jurisdiction.

- Focused on gold deposits in the highly prospective Arabian-Nubian Shield. Projects in Ethiopia and Saudi Arabia
- On target to becoming a junior gold producer by 2017
- 40% owner of Gold&Minerals (G&M) with Saudi partner ARTAR
- 100%- owned Tulu Kapi project in Ethiopia, progressing rapidly to development in 2015. MLA lodged on 6 October 2014
- Support from Ethiopian government who had been ready to grant permits in mid-2013 and are keen to expedite
- Tulu Kapi provides a solid foundation for exploration program in Ethiopia and Saudi Arabia



- IPO on AIM in Dec 06. Equity financings of c. \$25M to test opportunities in Africa and Middle East
- Focused on the Arabian -Nubian Shield from 2008, starting in Saudi Arabia with  $\approx 1,600\text{km}^2$  applications
- Target to ramp up production in 2017 for 80-90Koz Au pa

### Tulu Kapi and exploration targets in Ethiopia

- \$50M historic expenditure by previous owner to complete full DFS on 2Moz Resource and 1Moz Reserve
- KEFI acquired Tulu Kapi for £6M (£4.5M for 75% Dec 13 + £1.5M for 25% Sep 14). \$10 per reserve oz
- 100% ownership provides KEFI with full control of project development and funding flexibility
- Resources (1.9Moz) and Reserves (1Moz) upgraded and signed-off by KEFI and Snowden (JORC 2012)

### Jibal Qutman plus exploration targets in Saudi Arabia

- 2012 gold discovery at Jibal Qutman within 12 months of EL grant, with initial Resource 0.5Moz Au (JORC)
- 26 ELs are under application covering  $\approx 1,600\text{km}^2$  for a major regional exploration program, targeting to maximise self-funding by G&M from Jibal Qutman gold discovery



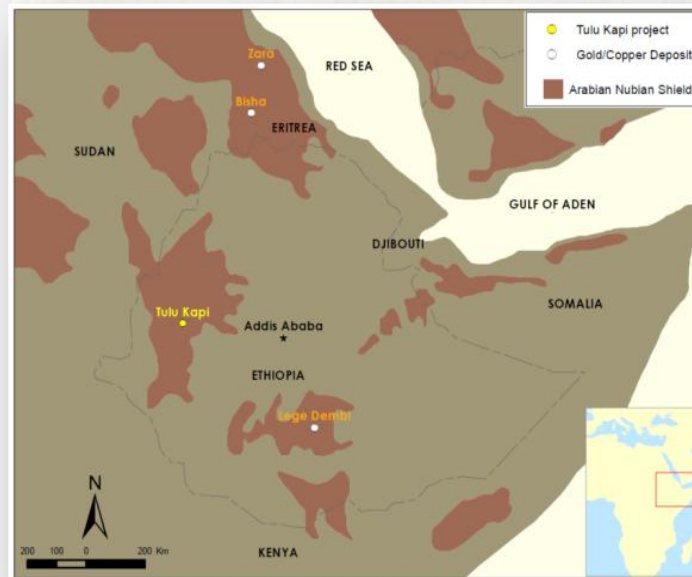
## ETHIOPIA



- **Fastest** growing non-energy economy in Africa, 2<sup>nd</sup> largest population in Africa (+80m)
- **Dynamic economy:** GDP grew by 8.5% over the past 5 years, and over 7.1% in 2013. Main economic partners: China, Germany, Saudi Arabia, USA, Belgium. Ethiopia's land footprint is greater than Spain and France combined, about 50% of Western Australia
- **Diverse mineral resource endowment:** Currently 136 companies working on 246 licences. Newmont and Gold Fields recently commenced Au exploration in Ethiopia
- **Government actively boosting mining sector:** income tax reduced, royalty on Au reduced, legislative incentives including security of tenure, exemption from customs duty and taxes on mining equipment, accelerated depreciation on pre-production cost and capex
- **Gold is main mineral export:** gold exports increased to \$602M in 2013 from \$5M in 2001
- **Lege Dembi - the largest Au mine in Ethiopia:** 135,000oz pa production, reserve 1.98Moz Au

### KEFI's revised development strategy

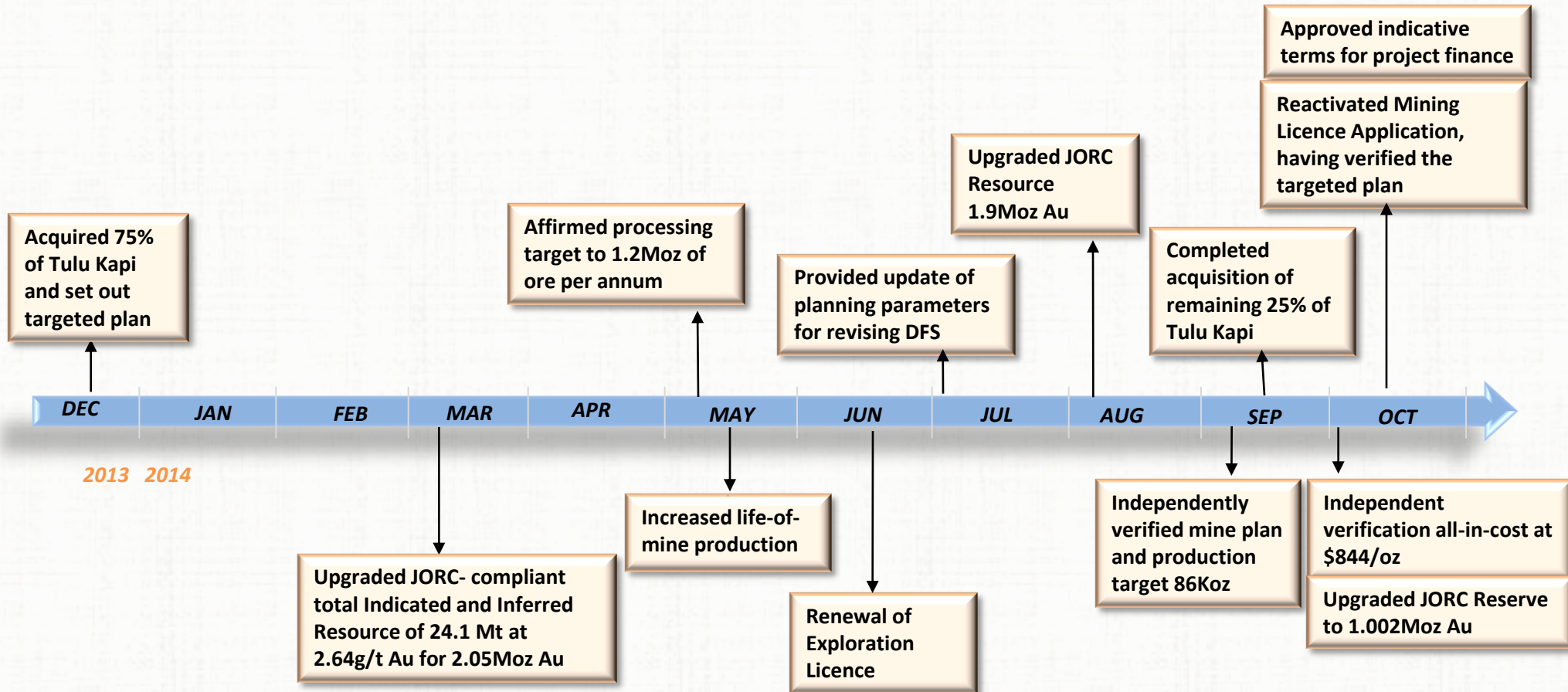
- Selective mining of the orebody to:
  - Reduce pit size and associated waste mining
  - **Increase Head Grade from 1.8g/t to c. 2.4 g/t Au**
- Reduce original 2Mtpa plant to  $\approx 1.2$ Mtpa, **almost halve capex from  $\approx \$235$ M to  $\approx \$130$ M (based on all-new equipment and owner-mining)**
- Reduce All-in Costs by mining fewer tonnes at a higher grade and reducing waste, capex and closure costs
- Upgraded DFS to be tabled for bank review end-2014



Life-of-Mine Opex Metrics for Tulu Kapi	Previous Owner Dec 2012 DFS Estimate	KEFI Sep 14 Verified Estimates
Mining cost - \$/tonne of material	2.5	2.75
Processing cost - \$/tonne of ore processed	8.5	8.31
G&A - \$/t (Life-of-mine \$M)	5.66 (\$96M)	6.14 (\$79M)
All-in Costs - \$/oz, including royalty	999	844



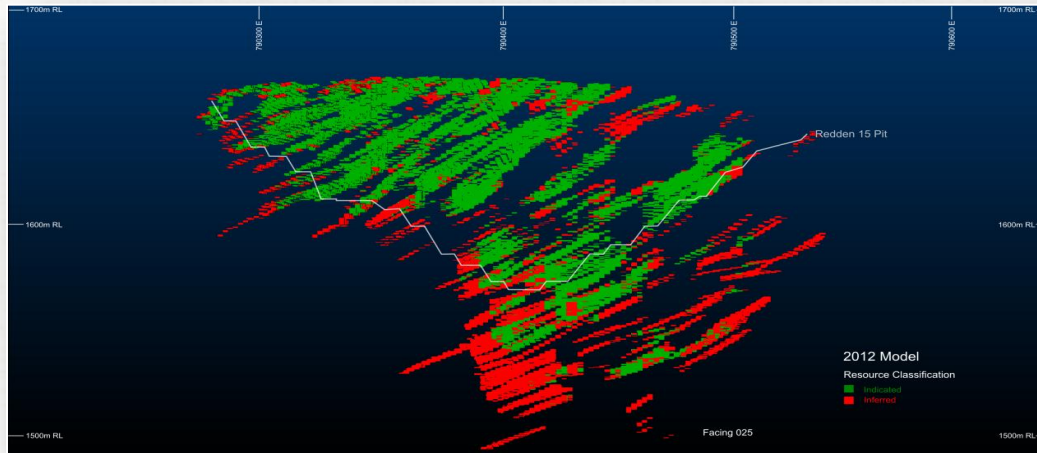
## TULU KAPI'S RAPID OVERHAUL SINCE ACQUISITION BY KEFI





## TULU KAPI: UPGRADED RESOURCES GIVE HIGHER CONFIDENCE

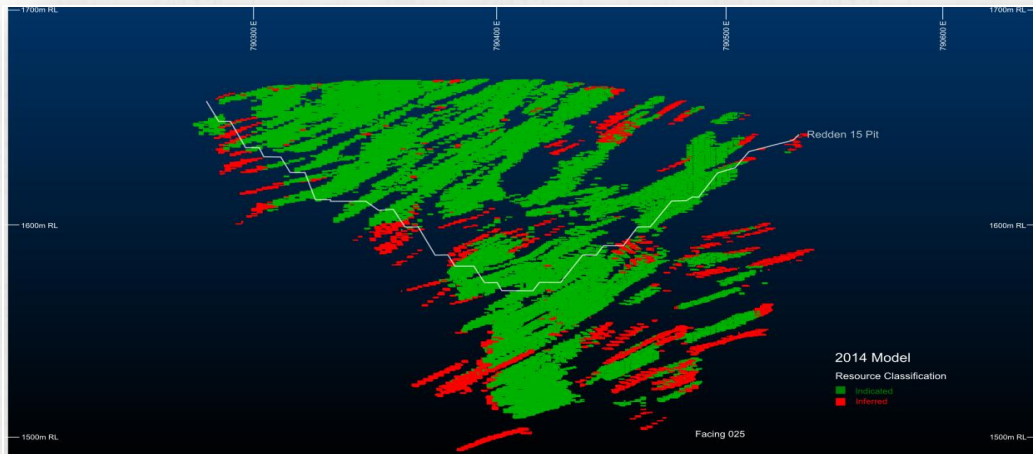
2012

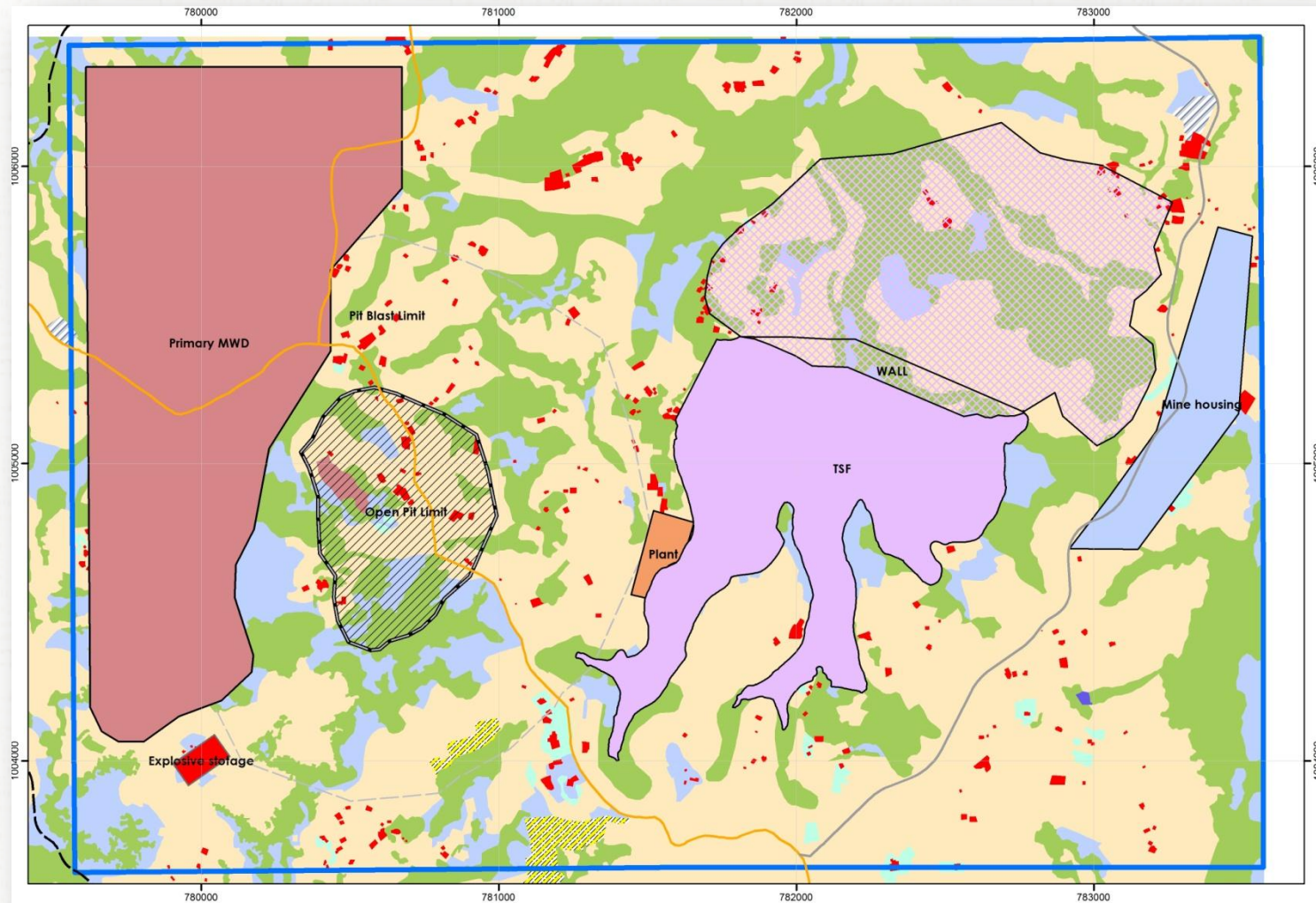


**Green** = Indicated

**Red** = Inferred

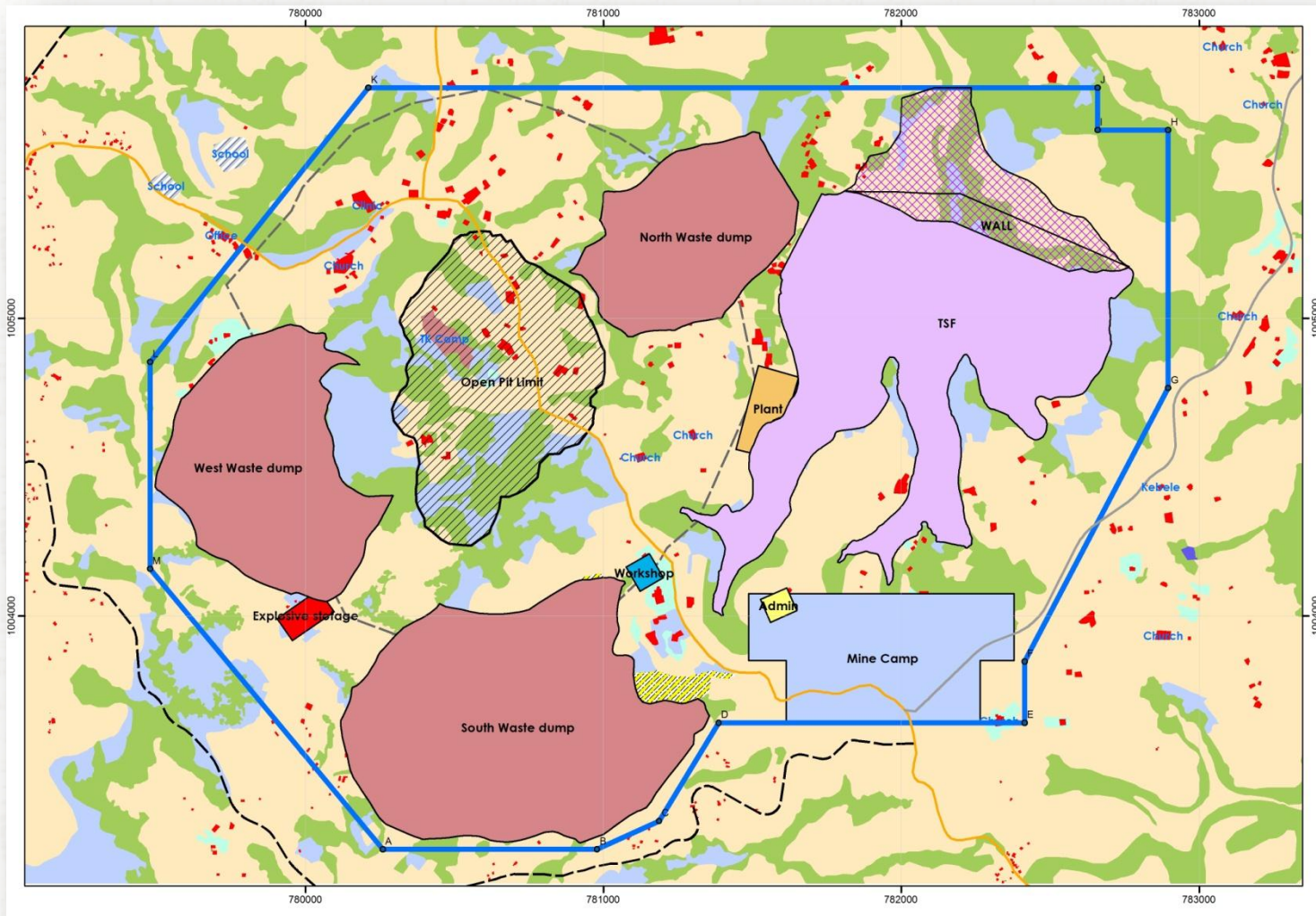
2014



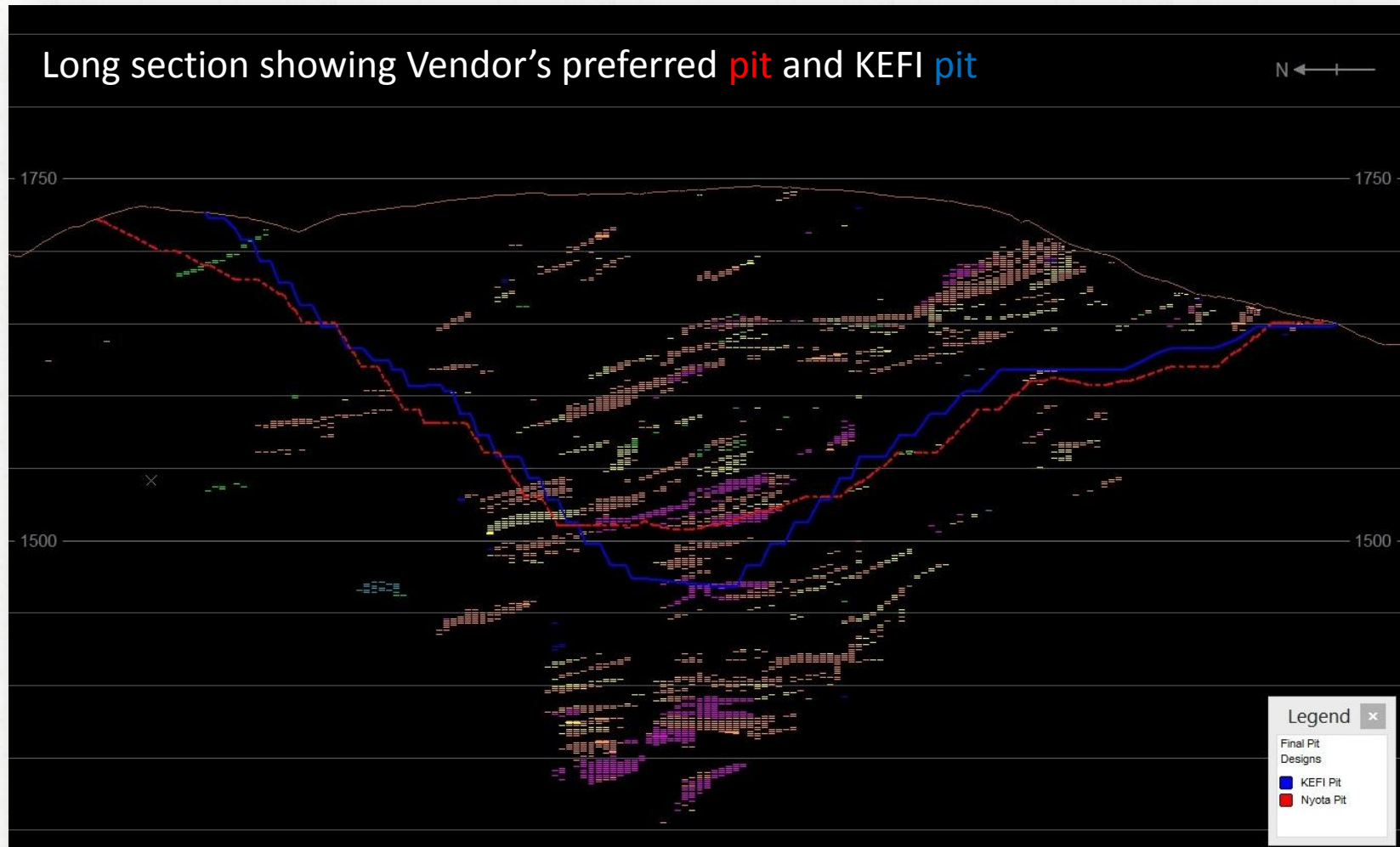




KEFI REDUCED THE AREA AND SCULPTED THE LAYOUT TO MINIMISE  
HAULAGE DISTANCES, ENVIRONMENTAL IMPACT AND COMMUNITY DISRUPTION

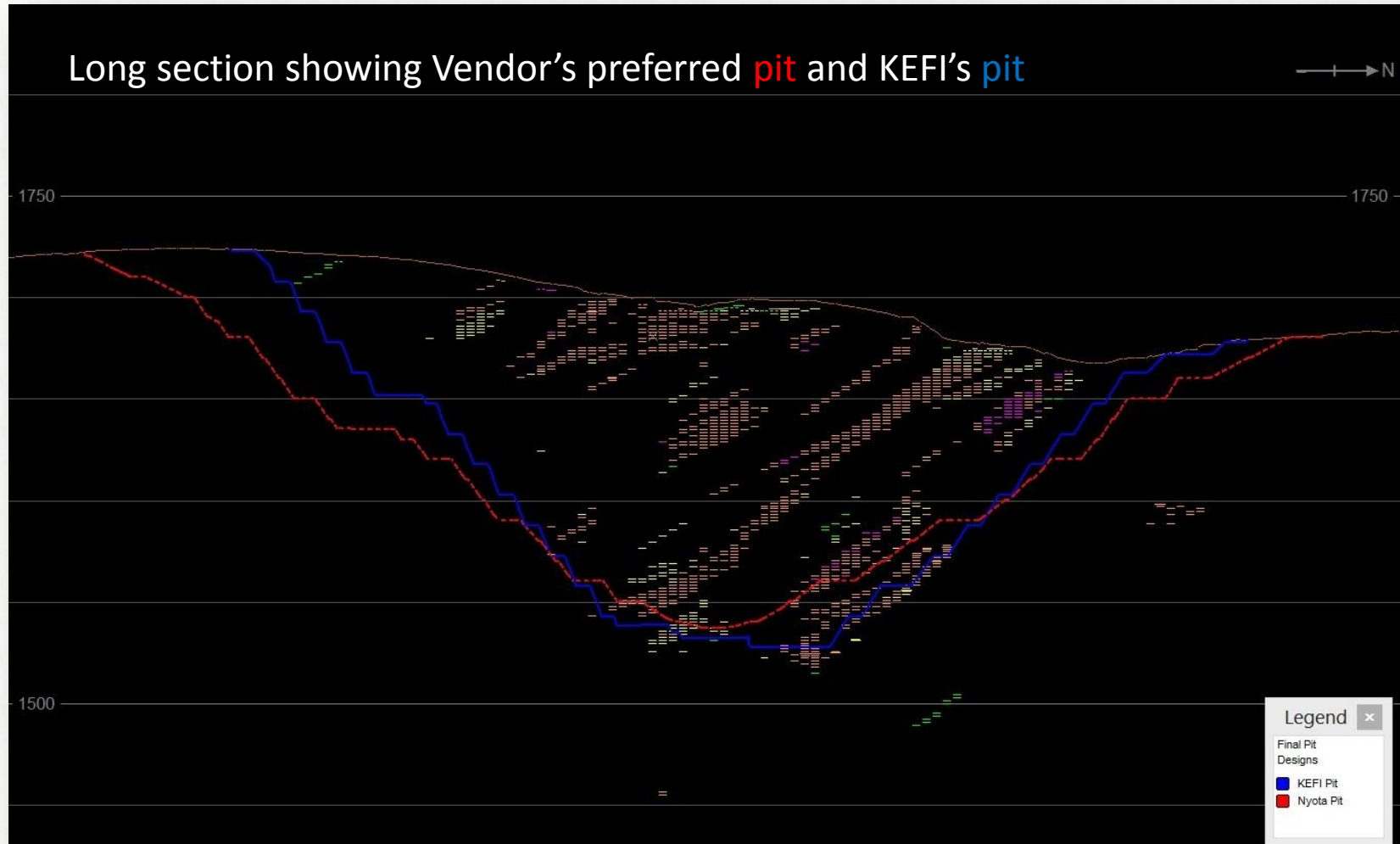


## KEFI RE-DESIGNED THE MINE BY MOULDING PIT SHAPE AROUND GEOLOGICAL STRUCTURES AND CONSERVATIVELY REFINING SLOPES





## KEFI RE-DESIGNED THE MINE BY MOULDING PIT SHAPE AROUND GEOLOGICAL STRUCTURES AND CONSERVATIVELY REFINING SLOPES



## KEFI-ESTIMATED COSTS AND MINE PLAN HAVE NOW BEEN SUBSTANTIATED AND KEFI CAN NOW PROCEED TO REFINE DURING DFS AND TENDERING

	KEFI SEP 14 INDEPENDENTLY REVIEWED ( + contract-mining est) (1)	KEFI SEP 14 INDEPENDENTLY REVIEWED (owner-operated mine)
Initial Capex	\$107M	\$130M
Working Capital	\$20M	\$20M
Total Investment	\$127M	\$150M
Gold Production (2)	925Koz	925Koz
All-in-Costs (3)	\$887/oz	\$844/oz
Ore Mined	12.9Mt @ 1.2Mtpa	12.9Mt @ 1.2Mtpa
Waste Mined	130Mt	130Mt
IRR A/T, \$1,250 Au	21%	21%
NPV5% B/T, \$1,500	\$320M	\$345M
NPV8% A/T, \$1,250	\$87M	\$100M
IRR A/T and finance		36%

- (1) Sep 14 contract-mining is same as Sep 14 owner-mining except that mining capex removed and mining costs increased for contractor's margin
- (2) The production schedule will be further refined during the DFS update and currently shows an average of 50K oz in Years 1 & 11 and an average of 92K oz pa in Years 2-10. This ignores potential heap leach of low-grade stockpile and mining of underground resources which remain open at depth
- (3) All-in-Costs for all cases now include 7% royalty on sales revenue (This had not been included in Vendor's DFS 12 or in Dec 13 KEFI Estimate)

- **Q4-14:**
  - **DFS to be updated to bankable standards**
  - **Community resettlement consultations continue**
  - **Examine opportunities for second-hand plant and contract mining**
- **Q1-15:**
  - **Project Finance Technical Audit and DFS sign-off**
  - **Mining Licence**
  - **Trigger Phase I of community resettlement, 120 families**
  - **Project finance credit approval**
  - **Trigger construction of early works**
- **Q4-15:**
  - **Major works commence**

**Q4-14:** \$5M (£3M) to finance activities to update the full DFS. Several alternative structures being examined. Use of funds is to complete Licencing and document full Project Financing of Tulu Kapi Investment c. \$130-150M, depending on owner-mining or contract-mining

**Q1-15:** Early-Stage Finance \$10M after updating of DFS and approval of Mining Licence

**Q3-15:** Equity+Mezzanine c. \$30M, at parent company level or at project subsidiary level, after Project Finance credit approval and documentation

**Q4-15:** Project Finance \$100-120M

**Notes:**

- **Ethiopian government is entitled to 5% free-carry on production start**
- **Early-Stage Finance:** some of project finance banks have also confirmed interest in this portion
- **Project Finance:** Assembled preferred commercial banks which have confirmed normal indicative terms for up to 8-year tenor with 2-year grace-period. Development banks have also confirmed interest to examine possible longer tenor for parts of the facility



**Hon. Tolossa Shagi, Minister for Mines of the Federal Republic of Ethiopia, stated on 3 September 2014:**

*“The Ethiopian Government expects the Tulu Kapi gold mine to be developed as soon as KEFI Minerals has completed the refinement of the mine’s development plans.*

*“We work hard with the industry to develop our mineral resources and, at the moment, particularly with KEFI, to finalise various planning issues including the preparation of the local community for project construction to commence next year.”*



**Fabio Granitzio**

**Exploration Manager** Geologist (PhD. Cagliari, Italy). Track record of gold discoveries in Sardinia and Saudi Arabia. Over 16 years experience in the Americas (Escondida), Europe, North Africa and Middle East.



**Simon Cleghorn**

**Resources Manager** (B. Eng. Min. Exploration & Mining Geology (Hons.) WA School of Mines). Over 21 years in mining geology and development. Commenced in 1990 with WMC & later Plutonic in Australia, Penjom mine in Malaysia, Chief Geologist Zod Mine Armenia and EM at Madneuli operations, Georgia.



**Sergio di Giovanni**

**Metallurgist & Dev. Manager KSA** (BSc. Murdoch, Perth, MAUSIMM). Over 23 years experience in operations in Australia, Asia, Europe, Mid-East and Americas. He has expertise in CIL, heap leach and flotation plants for gold, base metals & iron ore mines.



**Patrick Gorman**

**Development Advisor & Consultant Mining Engineer** (BSc (Hons.) Mining, Imperial College UK, MSc Mining, Colorado School of Mines) A Chartered Engineer (UK) with 36 years of international technical and project experience.



**Kebede Belete**

**Country Manager Ethiopia** Geologist (PhD, Austria; MPhil, UK; BSc, Ethiopia). Over 25 years of experience working in exploration projects as Exploration Manager and Country Manager for Ethiopian Ministry of Mines, Golden Prospect Mining Company LTD (UK), Minerva Resources LTD (UK) and Nyota Minerals LTD (UK).



**Tadesse Worku**

**Chief Geologist** (BSc, AAU., Ethiopia, Msc IIT-KGP. India): Over 20 years as exploration geologist and exploration leader in national, multinational and international projects for gold and base metals in the ANS of Ethiopia. Responsible for discovery & development of Tulu Kapi.



**Abera Fantaye**

**Database & GIS Manager** Geologist (BSc., AAU), Remote Sensing and GIS (MSc., AAU). 30 years experience in mineral exploration and as GIS and database expert (17 years in government & 13 years in private sector).



**Rob Williams**

**Project & Systems Adviser**

(BA, MBA, Dip Mining Engineering, Registered Mine Manager). Formerly Project Director EMED Mining, Dep Director Operations Development BHP-Billiton's Olympic Dam, Principal Engineer Coffey International.

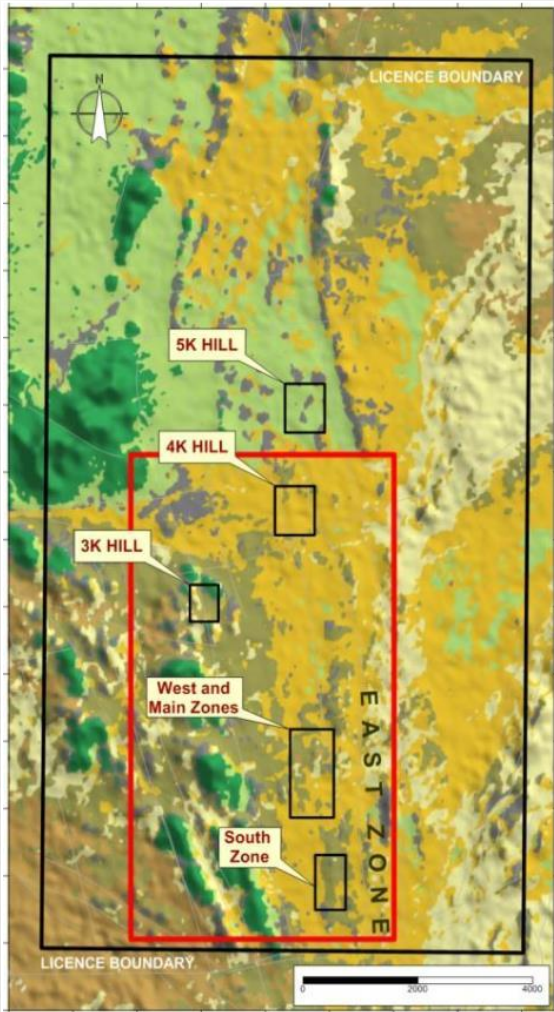


## SAUDI ARABIA



- Saudi Arabia is **developing its mineral sector**, diversifying the country's revenues away from oil
- Saudi Arabia is largely unexplored with **few companies exploring for gold**
- G&M (KEFI 40%, ARTAR 60%) – Strategic Saudi partner, Abdul Rahman Saad Al Rashid and Sons (ARTAR) - a major local group that provides administrative, logistical, financial support
- G&M has a **proprietary database** for selective targeting in the Arabian- Nubian Shield (containing historic workings, geology, geophysics, remote sensing, prospect geology, alteration and structure)
- Few western mining companies operating in the country; includes Barrick Gold, which owns the Jabal Sayid Mine. Once in production, annual production expected at 100-130 m lbs of Cu
- Exploration and development **costs are low by industry standards**. Saudi Industrial Development Fund provides **loans for up to 75% of the capital cost** of mine development at nominal interest

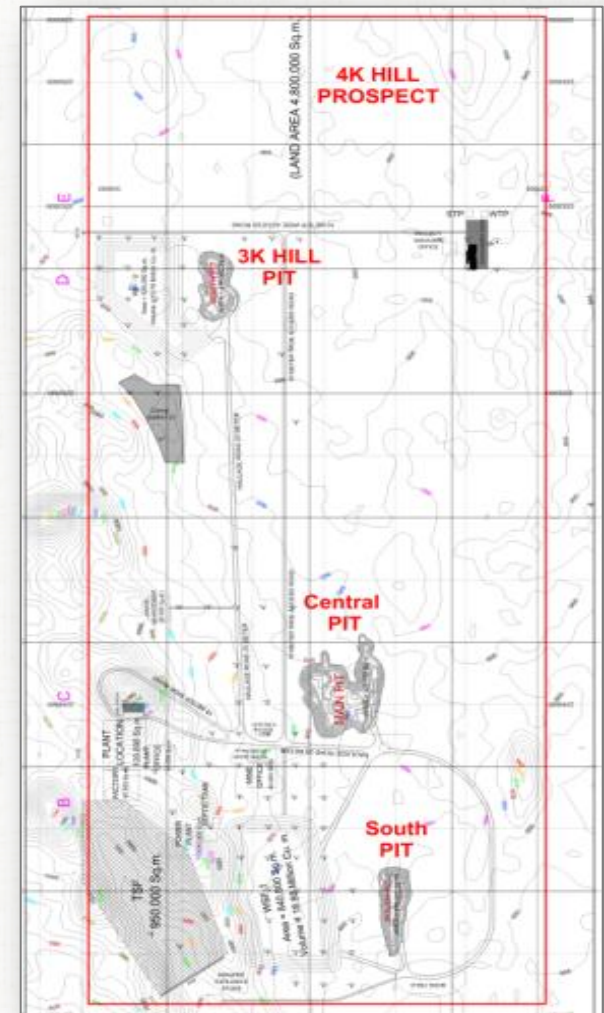




- The EL was granted in July 2012 and is approximately **99km<sup>2</sup>** in area
- **Mineralisation identified in five areas:** Main Zone, South Zone, West Zone, 3K Hill and 4K Hill
- Hosted in the +300km north-south trending Nabitah-Tathlith fault zone. Another area under evaluation is 5K Hill
- Initial resource reported in 2013



- **Mining** – Pit shell designs reviewed by AMC Consultants
- **Processing** – Process flow diagrams and design criteria performed with in-house expertise
- **Engineering Design** – Consultant HDO completed plant layout, major equipment list and bill of quantities. Currently reviewing to reduce estimated capex
- **Environmental** – MDS environmental consultants reviewed environmental study for inclusion in PFS
- **Hydrology** – Large diameter water well completed. Pumping test completed and hydrology report completed
- **Metallurgy** – Tests currently being performed will be sufficient to confirm plant design for PFS level study



- Emerging leader in the under-explored Arabian-Nubian Shield, comparable to the shields of Australia and Canada which host most of their gold production
- **Independently verified** to have the potential to be **producing approx. 86Koz Au pa from 2017**
- **Recently announced milestones** include:
  - independent sign-off of Tulu Kapi resources, capex, opex, production plans and reserves
  - indicative terms for project finance and re-activation of Tulu Kapi Mining Licence Application
- Projected robust cash flow for payback, returns on equity invested, organic growth and dividends
- Finance plan targets ≈20% of capex to be equity and mezzanine funded, with most from PF
- **Experienced management team** for discovery, development and financing. Team being expanded as KEFI moves into construction and operations
- **Expect to reach following milestones in next six months:** approval of mining licence, update DFS for now-confirmed plans, full credit approval of project finance, early-stage finance drawdown for community resettlement and commence initial construction



## APPENDIX



KEFI share price (p)



**Existing KEFI shareholders \*\* :**

Odey	12%
Standard Life	8%
EMED Mining	7%
TD Direct Investing Nominees	8%
Barclays	7%
Hargreaves Lansdown (Rashid family)	6%
Jim Nominees	6%
HDSL	5%
Lynchwood Nominees	4%
Board of Directors**	2%

**Existing Issued Share Capital**      **1,045,336,880**

**Existing Market Cap at 1.5p**      **£15.7M (\$25.1M)**

**Outstanding management incentive options and broker warrants\***      **76,642,301**

**As a % of enlarged**      **6.3%**

*\*Priced between 1.5-7p  
(excludes any broker warrants on the proposed placing)*



**Harry Anagnostaras-Adams**  
***Executive Chairman***

Founder or co-founder Citicorp Capital Investors Australia, Pilatus Capital, Australian Gold Council, EMED Mining and KEFI Minerals. Chairman Semarang Enterprises. Has overseen a number of start-ups.



**Ian Plimer**  
***Deputy Chairman***

Numerous geology Professorships including Newcastle, Melbourne, Munich and Adelaide Universities. Past and present Directorships include Ivanhoe Australia, Lakes Oil, Sun Resources, CBH Resources, Silver City Minerals, Niuminco and various Hancock Prospecting Pty Ltd entities. Much of career in industry.



**John Leach**  
***Finance Director***

BA(Econ.), MBA, MICA (Aust & Canada). Over 25 years' in senior positions within the mining industry. Exec. Director EMED Mining, Former Directorships with Resource Mining Corporation Limited and Gympie Gold Limited.



**Jeff Rayner**  
***Exploration Director***

BSc (Hons) Geology. Over 27 years experience; BHP Gold, Newcrest Mining in Australia and Indonesia; Chief Geologist Gold Mines Sardinia, VPE Medoro Resources and EM Central Europe EMED Mining.



**Norman Ling**  
***Director***

Norman Ling was a member of the British diplomatic service for more than 30 years, for the last ten with the rank of ambassador. He has served in a wide range of countries in the Middle East and Africa. His last post, before retirement, was as Ambassador to Ethiopia, Djibouti and the African Union. For the last two years he has been actively involved with development of the mining industry in Ethiopia.



**Harry Anagnostaras-Adams**

**Chairman**

Mobile: +357 99457843

**England** - Registered office

**Cyprus** - Group corporate team

**Ethiopia** - Development and exploration teams

**Saudi Arabia** - Exploration team

**Turkey** - Support and monitoring

Tel: +90 232 381 9431 or +90 232 381 9486

Fax: + 90 232 381 9071

Email: [info@kefi-minerals.com](mailto:info@kefi-minerals.com)

Website: [www.kefi-minerals.com](http://www.kefi-minerals.com)